

ภาคผนวกที่ 4

เอกสารสอบเทียบความถูกต้องของเครื่องมือตรวจวัดคุณภาพสิ่งแวดล้อม

- | | |
|------------|--------------------------|
| ลำดับที่ 1 | คุณภาพอากาศในบรรยากาศ |
| ลำดับที่ 2 | คุณภาพอากาศจากปล่องระบาย |
| ลำดับที่ 3 | คุณภาพน้ำ |
| ลำดับที่ 4 | ระดับเสียงทั่วไป |

ตารางสรุปรายการเอกสารการสอบเทียบความถูกต้องของเครื่องมือเก็บตัวอย่าง
และเครื่องมือตรวจวิเคราะห์คุณภาพสิ่งแวดล้อม

รายการตรวจวัด	เครื่องมือเก็บตัวอย่าง	เครื่องมือตรวจวิเคราะห์
	ชื่อเครื่องมือ	ชื่อเครื่องมือ
1. คุณภาพอากาศในบรรยากาศ		
VOCs	Mass Flow Meter	GC/MS
Nitrogen Dioxide (NO ₂)	NOx Analyzer Serial No. 2284, 4411	NOx Analyzer Serial No. 2284, 4411
2. คุณภาพอากาศจากปล่องระบาย		
Total Suspended Particulate	Console No. R04 Pitot Tube No. B24	Digital Balance
Oxides of Nitrogen	Vacuum Gauge	Spectrophotometer
Styrene	Personal Pump SKC No. B62 Rotameter No. L-R04	GC/FID
Pentane	Personal Pump SKC No. B62, B72 Rotameter No. L-R03, R04	GC/FID
3. คุณภาพน้ำ		
pH	-	pH Meter
BOD ₅	-	BOD Analyzer
Total Suspended Solids	-	Digital Balance
Grease & Oil	-	Digital Balance
COD	-	COD Reactor
4. ระดับเสียงทั่วไป		
L _{eq} 24 hr, L ₉₀ , L _{max}	Acoustic Calibrator Sound Level Meter No. CR-B02, B10	-

ลำดับที่ 1

คุณภาพอากาศในบรรยากาศ



MIRACLE INTERNATIONAL TECHNOLOGY CO.,LTD

214 Bangwaek Rd. Bangpai Bangkae Bangkok 10160
Tel.: 0-2865-4647-8 Fax: 0-2865-4649 http://www.mit.in.th



CALIBRATION CERTIFICATE

Page 1 of 4

Certificate No. : L202412119-0001

Date Issued : 13-Dec-24

Customer : S.P.S. CONSULTING SERVICE CO., LTD.
7 Soi Phaholyothin 24 Phaholyothin Road., Jompol, Chatuchak,
Bangkok 10900

Equipment : Mass Flow meter

Manufacturer : Dwyer

Model : GMF-2101

Serial No. : -

ID No./Tag No. : MF01/51

Date Received : 11-Dec-24

Date Calibrated : 12-Dec-24

Calibrated by : Saruth Srichutikul

Calibration Method or Calibration Procedure Used

In-house method : CP-34 by comparison against mass flow calibrator.

This certificate is traceable to national standards, which realize the units of measurement according to the International System of Units (SI).

Result of Calibration

The reported uncertainty of measurement was based on standard uncertainty multiplied by a coverage factor $k = 2$, providing a level confidence approximately 95 percent.

This certificate may not be reproduced other than in full except with the prior written approval of the Miracle International Technology Company Limited.

Approved by:

Sarayuth T.
(Sarayuth Tochua)



Certificate No. : L202412119-0001

Ambient Temperature : $(25 \pm 2)^{\circ}\text{C}$

Relative Humidity : $(50 \pm 15)\%\text{RH}$

Capacity Range : 17 ml/min

Calibration Media : Air

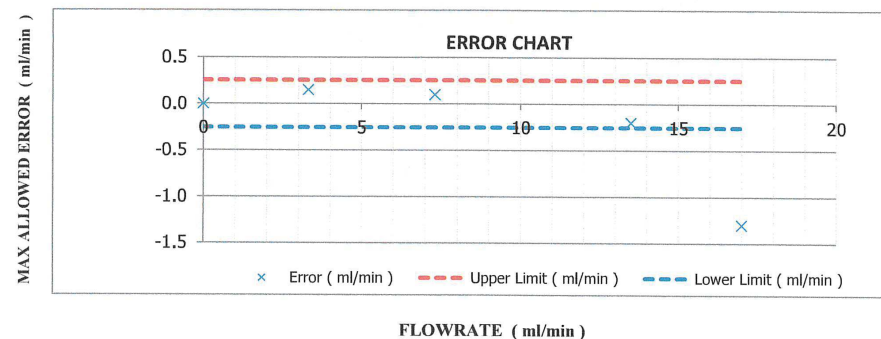
Type : Mass Flowmeter

Unit Under Calibration Reference Condition : Pressure 101.325 kPa(abs) , 21°C , Nitrogen

Before Adjustment

Temperature ($^{\circ}\text{C}$)	Pressure (kPa)	UUC Reading (ml/min)	STD Reading (ml/min)	Error (ml/min)	Uncertainty (\pm ml/min)
24.00	100.46	0.00	0.000 *	0.000	0.063
24.10	100.62	3.30	3.149	0.151	0.13
24.10	100.78	7.30	7.2	0.10	0.14
24.20	101.07	13.50	13.7	-0.20	0.15
24.20	101.30	17.00	18.3	-1.30	0.19

Error = Unit Under Calibration - Standard



Certificate No. : L202412119-0001

Ambient Temperature : (25 ± 2)°C

Relative Humidity : (50 ± 15)%RH

Capacity Range : 17 ml/min

Calibration Media : Air

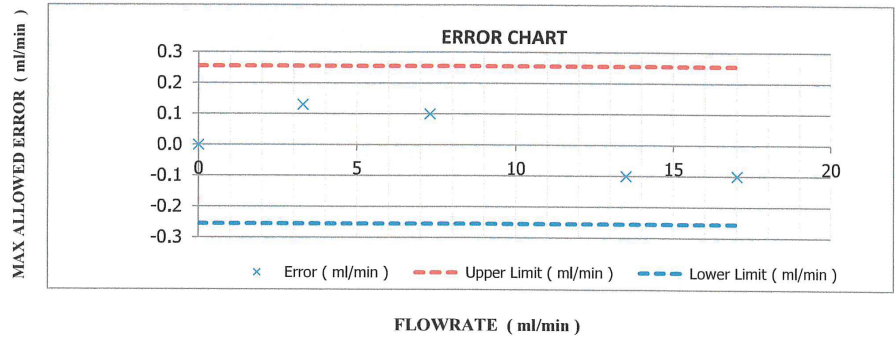
Type : Mass Flowmeter

Unit Under Calibration Reference Condition : Pressure 101.325 kPa(abs) , 21 °C , Nitrogen

After Adjustment

Temperature (° C)	Pressure (kPa)	UUC Reading (ml/min)	STD Reading (ml/min)	Error (ml/min)	Uncertainty (± ml/min)
24.00	100.45	0.00	0.000 *	0.000	0.063
24.10	100.62	3.30	3.170	0.130	0.13
24.10	100.78	7.30	7.2	0.10	0.14
24.20	101.01	13.50	13.6	-0.10	0.15
24.00	101.19	17.00	17.1	-0.10	0.18

Error = Unit Under Calibration - Standard



Certificate No. : L202412119-0001

Note : The actual flow rate is determined by the equation :

$$Q_{Meas} = Q_{Ref} \times \frac{P_{Ref}}{P_{Meas}} \times \frac{T_{Meas}}{T_{Ref}}$$

; Q = Flow rate
; P = Absolute pressure
; T = Absolute temperature
; Subscript "Meas" = Measurement condition
; Subscript "Ref" = Reference condition

Condition As-Received : Used Item

The measurment results and statements of conformity with specification only relate to the item calibrated.

Traceability of Certificate :

The International System of Units (SI) through
NIMT Certificate No. MW-0047-24,MW-0048-24 for Gas Flow meter Serial No. M5209179B/M5209179A, Due 03-Jul-25

End of Certificate

GC Clarus 600/680 Preventive Maintenance (PM)

Company Name:	S.P.S. Consulting Service Co.,Ltd		
Address (Instrument Location):	7 Soi Phaholyothin24 Phaholyothin Road, Jompol, Chatuchak, Bangkok, 10900.		
Serial Number:	680S14042502	Service Tag:	N68APSSFXMP
Customer Name (if applicable):	Ms.Naruecha	PM number:	1 of 2
Service Engineer Name:	Monchai Kitcharoenkeat	Service Order Number:	WO-
Date PM Performed: (DD-MMM-YYYY)	22-Feb-2025	Next PM Due Date: (DD-MMM-YYYY)	22-Aug-2025

Part Number	Release	Publication Date	
TH09370070	C	August 2016	

Scope

The purpose of this PM is to ensure the continued functionality of the Clarus 600 and Clarus 680 GC by inspecting and replacing any worn or damaged parts. This service should only be performed by a trained representative of PerkinElmer. The customer should save their method before the PM begins.

General Instructions:

The customer must provide the engineer operational data to demonstrate recent instrument performance prior to starting the PM. Always check with the customer before making any changes that may affect the customer's analysis or calibration, including a current back-up of system software and/or data files. The completed document should be signed by an authorized PerkinElmer and customer representative and left with the customer. Update the PM sticker and instrument logbook as required.

Copyright Information

This document contains proprietary information that is protected by copyright. All rights are reserved. No part of this publication may be reproduced in any form whatsoever or translated into any language without the prior, written permission of Perkin Elmer, Inc. **Copyright © 2013 PerkinElmer, Inc.**

Trademarks

Registered names, trademarks, etc. used in this document, even when not specifically marked as such, are protected by law. PerkinElmer is a registered trademark of PerkinElmer, Inc. All other trademarks and registered trademarks not owned by PerkinElmer, Inc. or its subsidiaries that are depicted herein are the property of their respective owners. **Except as specifically set forth in its terms and conditions of sale, PerkinElmer makes no Warranty of any kind with regard to this document, including, but not limited to, the implied warranties of merchantability and fitness for a particular purpose.** PerkinElmer shall not be liable for incidental or consequential damages in connection with the furnishing or use of this document.

Component List

Component / Specific Model	Serial #	Software Version	Configuration Notes
Clarus680	680S14042502	Totalchrom6.3.2	PSS, PSS, FID,
Clarus SQ8T	648N4050804	Turbomass 6.4	
AtomX	US14113002	Tekma AtomX	

Parts Lists

Additional Tools Required for PM				
Part Number (if applicable)	Description	Quantity	Serial #	Calibration Due Date (MM/YY)
N/A				
Additional Reagents and Standards Required for PM				
Part Number (if applicable)	Description	Quantity	Batch/Lot #	Expiration Date (MM/YY)
N/A				

Procedure Checklist

Use (✓) to check off those steps in the checklist that have been completed.

1. General:

- ☒ Review the instrument performance with the customer and document any recent problems.
- ☒ Check incoming AC line voltage for proper levels and grounding.
 L-N 220 Volt
 L-G 220 Volt
 N-G 0.33 Volt

**Neutral to ground not more than 0.5 volts peak to peak*
- ☒ Inspect all gas line filters and traps; Replace if necessary with customer supplied spares.
 Carrier gas ☒ Helium ☐ Nitrogen ☐ Hydrogen
 Moisture level ☒ Good ☐ Need to replace ☐ Other _____

 Detector gas ☒ Air Zero ☒ Hydrogen ☐ Nitrogen ☐ Helium
 Moisture level ☒ Good ☐ Need to replace ☐ Other _____
- ☒ Inspect the customer log book and make any appropriate PM entries.
- ☒ Leak check all fittings from the gas source to instrument.
 Gas leakage ☒ Pass ☐ Fail Comment _____
- ☒ Perform general inspection of system for cleanliness.
- ☒ Inspect for functional and clean electronic cooling and oven vent fans
 Electronic cooling fan ☒ Yes ☐ No
 Oven cooling fan ☒ Yes ☐ No

2. Electronic :

- ☒ Check oven temperature. Calibrate if necessary.
 Oven temperature set point 150 °C ☒ Pass ☐ Fail
- ☐ Check sub-ambient option. (If installed).
 Oven temperature set point 5 °C ☐ Pass ☐ Fail
- ☒ Perform routine maintenance on detector/injector. Replace parts as necessary with customer supplied spares.

- ☒ Check flows, including split flows if applicable. Calibrate if necessary.
 Carrier flow Pass
 Split flow Pass
- ☒ Check detector gas flows and adjust if necessary.
 Detector flow Pass
- ☒ Autosampler installed ☒ Yes ☐ No
 Check autosampler sensor for wear and replace if necessary.
 Vial sensor Pass
 Door sensor Pass
 Tower sensor Pass
 Plunger sensor Pass
 Elevator sensor Pass
- ☒ Remove syringe, manually flush. Replace with customer supplied spare if necessary.
- ☒ Check firmware version. Upgrade to current levels if necessary.
 Firmware version 6.5
- ☒ Measure all accessible power supply voltages.
 5 Volt Pass
 +15 Volt Pass
 -15 Volt Pass
 24 Volt Pass
- ☒ Record all detector voltage signal.
 Detector Channel A 1.12 mV.
 Detector Channel B NA mV.

3. Diagnostics Tests:

- ☒ Run instrument diagnostics.
☒ BRAM Pass
☒ EPROM Pass
- ☒ Run Autosampler diagnostics.
☒ BRAM Pass
☒ EPROM Pass

4. Review:

- ☒ Review with the customer PM work performed.
- ☒ Review with the customer routine maintenance procedures.
- ☒ Discuss recommended customer-supplied materials to have on hand
- ☒ Attach PM sticker.
- ☒ Update Logbook.

Additional Comments

Additional Comments Regarding the PM

Review

<i>The preventive maintenance checks and if applicable performance tests for Clarus600/680 GC have been completed.</i>	
This Clarus600/680 GC	Pass <i>the preventive maintenance.</i>
Review of Preventive Maintenance:	
Authorized PerkinElmer Representative: Monchai Kitcharoenkeat	Date: 22-Feb-2025 (DD-MMM-YYYY)
Authorized Customer Representative: Ms.Naruecha	Date: 22-Feb-2025 (DD-MMM-YYYY)

CALIBRATION REPORT					
CHEMILUMINESCENT NO / NO ₂ / NO _x ANALYZER					
DATE :	20 April 2025	BRAND :	API	MODEL :	
NO.	NOX-B05	SERIAL NO.	2284		
Calibrator (Dilution System)					
Brand	: Teledyne		Model	: 700	
Last Cal. Date	: 29 October 2024		Serial No.	: 421	
Reference Standard Gas					
Standard Gas	: Nitric Oxide (NO)		Cylinder No.	: A00726SV	
Certified Date	: 05 January 2023	Expired Date	: 05 January 2026	Cylinder Conc. : 48.8 ppm	
CALIBRATING CONDITION					
Pressure	1011	mmbar	Temp.	24.6 °C	
			% RH	50	
CALIBRATION SETTING					
Span	Initial Reading (Before Adj.),PPB			Final Reading (After Adj.),PPB	
Set Point	Expected Concentration	Analyzer Response	%Dif	Analyzer Response	Slope
Zero	0	0.10	-	0	-
NO Span	400	399.8	-0.050	400.0	1.008
NO _x Span	400	400.2	0.050	400.0	1.011
API Model 200E NO _x Analyzer Check List					
Test Values	Observed Value	Units	Nominal Range		
RANGE	500	PPB	500 standard		
STABILITY (Zero Gas)	0.1	PPB	< 2 with zero air		
SAMPLE FLOW	505	cc/min	500 ± 50		
OZONE FLOW	78	cc/min	80 ± 15		
PMT	103.5	mV	-20 - 150		
AZERO	94.2	mV	-20 - 150		
HVPS	670	V	420 - 900 constant		
RCCELL TEMP	50.1	°C	50 ± 1		
BOX TEMP	29.2	°C	8 - 48		
PMT TEMP	7.0	°C	7 ± 2		
MOLY TEMP	314.9	°C	315 ± 5		
RCCELL PRESS	8.4	IN-Hg-A	2 - 10 constant		
SAMPLE PRESS	28.7	IN-Hg-A	25 - 30 constant		
NO Span Conc	400	PPB	20 - 20,000		
NO _x Span Conc	400	PPB	20 - 20,000		
NO Slope	1.008	-	1.0 ± 0.3		
NO _x Slope	1.011	-	1.0 ± 0.3		
NO Offset	1.4	mV	-20 to +150		
NO _x Offset	0.9	mV	-20 to 150		
Stability at Zero	0.1	PPB	< 0.2		
Stability at Span	0.2	PPB	< 2 ppb @ 400 ppb span gas		



บริษัท เอส.พี.เอส. คอนซัลติ้ง เซอร์วิส จำกัด
S.P.S. CONSULTING SERVICE CO., LTD.
7 ซอยพหลโยธิน 24 ถนนพหลโยธิน แขวงจอมพล เขตจตุจักร กรุงเทพฯ 10900
7 Soi Phaholyothin 24, Phaholyothin Rd., Jompol, Chatuchak, Bangkok 10900
Tel : (662) 939-4370-72, Fax : (662) 513-4221, E-mail : sale@spscon.com, www.spscon.com

CALIBRATION REPORT					
CHEMILUMINESCENT NO / NO ₂ / NO _x ANALYZER					
DATE :	20 April 2025	BRAND :	API	MODEL :	200E
NO.	NOX-R04	SERIAL NO.	4411		
Calibrator (Dilution System)					
Brand	: Teledyne		Model	: 700E	
Last Cal. Date	: 28 October 2024		Serial No.	: 201-S	
Reference Standard Gas					
Standard Gas	: Nitric Oxide (NO)		Cylinder No.	: A00726SV	
Certified Date	: 05 January 2023		Expired Date	: 05 January 2026	
			Cylinder Conc.	: 48.8 ppm	
CALIBRATING CONDITION					
Pressure	1011	mmbar	Temp.	24.6	°C
			% RH	50	
CALIBRATION SETTING					
Span	Initial Reading (Before Adj.),PPB			Final Reading (After Adj.),PPB	
Set Point	Expected Concentration	Analyzer Response	%Dif	Analyzer Response	Slope
Zero	0	-0.10	-	0	-
NO Span	400	399.5	-0.125	400.0	1.003
NO _x Span	400	399.8	-0.050	400.0	1.007
API Model 200E NO _x Analyzer Check List					
Test Values	Observed Value	Units	Nominal Range		
RANGE	500	PPB	500 standard		
STABILITY (Zero Gas)	0.1	PPB	< 2 with zero air		
SAMPLE FLOW	507	cc/min	500 ± 50		
OZONE FLOW	78	cc/min	80 ± 15		
PMT	102.9	mV	-20 - 150		
AZERO	93.7	mV	-20 - 150		
HVPS	674	V	420 - 900 constant		
RCELL TEMP	50.2	°C	50 ± 1		
BOX TEMP	29.3	°C	8 - 48		
PMT TEMP	7.4	°C	7 ± 2		
MOLY TEMP	315.1	°C	315 ± 5		
RCELL PRESS	8.3	IN-Hg-A	2 - 10 constant		
SAMPLE PRESS	28.5	IN-Hg-A	25 - 30 constant		
NO Span Conc	400	PPB	20 - 20,000		
NO _x Span Conc	400	PPB	20 - 20,000		
NO Slope	1.003	-	1.0 ± 0.3		
NO _x Slope	1.007	-	1.0 ± 0.3		
NO Offset	1.0	mV	-20 to +150		
NO _x Offset	0.5	mV	-20 to 150		
Stability at Zero	0.1	PPB	< 0.2		
Stability at Span	0.2	PPB	< 2 ppb @ 400 ppb span gas		

Calibrated by :

Adul Dangklom
(Mr.Adul Dangklom)

Approved by :

Peera Detudom
(Mr.Peera Detudom)

ลำดับที่ 2

คุณภาพอากาศจากปล่องระบาย



บริษัท เอส.พี.เอส. คอนซัลติ้ง เซอร์วิส จำกัด
S.P.S. CONSULTING SERVICE CO., LTD.
7 ซอยพหลโยธิน 24 ถนนพหลโยธิน แขวงจอมพล เขตจตุจักร กรุงเทพฯ 10900
7 Soi Phaholyothin 24, Phaholyothin Rd., Jompol, Chatuchak, Bangkok 10900
Tel : (662) 939-4370-72. Fax : (662) 513-4221. E-mail : sale@spscon.com., www.spscon.com

Console Calibration Report

Calibration Method

Critical Orifices

Calibration Data

Console Data		Calibration Data		
No.	Serial No.	Date	y	DH _g (mmH ₂ O)
B01	1563	03/03/2025	1.003	49.40
B02	8002514	03/03/2025	1.004	49.57
B03	1503016	04/03/2025	0.999	49.93
B04	00006659	04/03/2025	0.996	49.88
B05	00007428	04/03/2025	1.007	49.14
R01	1561	05/03/2025	0.996	49.32
R02	8002513	04/03/2025	1.003	49.96
R03	1570	04/03/2025	0.998	50.08
R04	8002519	03/03/2025	0.997	49.53
R05	1503015	05/03/2025	1.005	50.25

Remark : Accept Value of y (test) is $0.97 < y < 1.03$

Accept Value of DH_g (test) is 46.7 ± 6.4 (mmH₂O)

Calibrated by :

Adul Dangklom
(Mr. Adul Dangklom)

Approved by :

Peera Detudom
(Mr. Peera Detudom)



บริษัท เอส.พี.เอส. คอนซัลติ้ง เซอร์วิส จำกัด
S.P.S. CONSULTING SERVICE CO., LTD.
7 ซอยพหลโยธิน 24 ถนนพหลโยธิน แขวงจอมพล เขตจตุจักร กรุงเทพฯ 10900
7 Soi Phaholyothin 24, Phaholyothin Rd., Jompol, Chatuchak, Bangkok 10900
Tel : (662) 939-4370-72. Fax : (662) 513-4221. E-mail : sale@spscon.com., www.spscon.com

Pitot Tube Calibration Report

Calibration Method

Standard Pitot Tube

Calibration Data

Pitot Tube Data			Calibration Data		
No.	Type of Pitot	Coefficient of Standard Pitot	Date	Avg. of Cp (test)	
				Side A	Side B
B03	S	0.99	03/02/2025	0.84	0.84
B04	S	0.99	04/02/2025	0.85	0.84
B05	S	0.99	04/02/2025	0.84	0.83
B07	S	0.99	04/02/2025	0.84	0.85
B08	S	0.99	05/02/2025	0.84	0.84
B09	S	0.99	03/02/2025	0.85	0.84
B11	S	0.99	03/02/2025	0.84	0.84
B16	S	0.99	05/02/2025	0.84	0.83
B18	S	0.99	05/02/2025	0.85	0.84
B19	S	0.99	04/02/2025	0.84	0.84
B21	S	0.99	04/02/2025	0.85	0.84
B24	S	0.99	04/02/2025	0.84	0.84
B27	S	0.99	05/02/2025	0.84	0.85
B30	S	0.99	05/02/2025	0.84	0.84
B31	S	0.99	05/02/2025	0.85	0.84
B33	S	0.99	05/02/2025	0.84	0.84
B35	S	0.99	03/02/2025	0.85	0.84

Remark : Accept value of Cp (test) is 0.84 ± 0.01

Calibrated by :

Adul Dangklom
(Mr. Adul Dangklom)

Approved by :

Peera Detudom
(Mr. Peera Detudom)



CALIBRATION LABORATORY Co., LTD.

2/10-11,14,55 Soi Prasert Manukit 29 Yaek 4, Prasert Manukit Rd., Ladphrao, Bangkok 10230
Tel. 02-578-0353-4 Fax: 02-578-2672 www.cal-laboratory.com E-mail:sale@cal-laboratory.com



CERTIFICATE OF CALIBRATION

FOR

NOMENCLATURE : VACUUM GAUGE
MANUFACTURER : HI-LIGHT
MODEL / TYPE : N/A
SERIAL NO. : N/A[64-220088-1]
CLID. NO. : 212301419
JOB CONTROL NO. : 240720076545
CALIBRATION SERVICE : ☒ IN-LABORATORY ☐ ON-SITE

CUSTOMER : S.P.S. CONSULTING SERVICE CO., LTD.
7 SOI PHAHOLYOTHIN 24 ROAD., JOMPOL,
CHATUCHAK, BANGKOK 10900

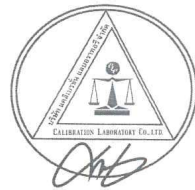
DATE OF RECEIVED : 20 July 2024

DATE OF ISSUED : 23 July 2024

The report of calibration shall not be reproduced except in full without approval of the Calibration Laboratory Co., Ltd.

Calibrated By : Sittipong Pimdee
Calibration Engineer

Approved By : Mongkol Yotsoontorn
Authorized Signatory
23 July 2024



This Calibration Certificate documents the traceability to national standards, which realize the units of measurement according to the International System of Units (SI)

Certificate No. Q24076545

F3-011-05/12-23

page 1 of 3



@clccalibration



CALIBRATION LABORATORY Co., LTD.

2/10-11,14,55 Soi Prasert Manukit 29 Yaek 4, Prasert Manukit Rd., Ladphrao, Bangkok 10230
Tel. 02-578-0353-4 Fax: 02-578-2672 www.cal-laboratory.com E-mail:sale@cal-laboratory.com



REPORT OF CALIBRATION

FOR

NOMENCLATURE : VACUUM GAUGE
MANUFACTURER : HI-LIGHT
MODEL / TYPE : N/A
SERIAL NO. : N/A[64-220088-1]
DATE OF CALIBRATION : 22 July 2024
DUE DATE OF CALIBRATION : 22 July 2025

ENVIRONMENT CONDITIONS :

Temperature : $(23 \pm 2) ^\circ\text{C}$

Relative Humidity : $(55 \pm 10) \% \text{RH}$

PROCEDURE USED :

This instrument was calibrated under procedure No. CLC-CPPP-05 according to DKD-R 6-1 as calibration guidelines.

The calibration was performed by direct measurement with Document Process Calibrator and Pressure Module which maintained by the Calibration Laboratory Co., Ltd.

REFERENCE STANDARD USED :

Document Process Calibrator, Fluke Model 741B S/N. 8295020 with Pressure Module Model 700PD5 S/N. 89404505.

TRACEABILITY :

The measurements are traceable to International System of Units (SI), through National Institute of Metrology (Thailand).

Certificate No. MP-0040-24, Due Date 08 February 2025.

UNCERTAINTY :

The reported uncertainty is based on a standard uncertainty multiplied by coverage factor of $k = 2$. It has been evaluated according to the "Calibration of Pressure Gauges (DKD-R 6-1)" which provides a level of confidence approximately 95%.

Certificate No. Q24076545

F3-011-05/12-23

page 2 of 3



@clccalibration



CALIBRATION LABORATORY Co.,LTD.

2/10-11,14,55 Soi Prasert Manukit 29 Yaek 4, Prasert Manukit Rd., Ladphrao, Bangkok 10230
Tel. 02-578-0353-4 Fax: 02-578-2672 www.cal-laboratory.com E-mail:sale@cal-laboratory.com



CONDITION OF CALIBRATION ITEM : RECEIVED IN GOOD OPERATIONAL CONDITION

MEASUREMENT RESULTS : (X) without adjustment () adjustment

The DUC was exercised by applying a known pressure from its zero to full scale 1 times. Then 2 series of known gauge pressure were applied. The STD reading were recorded and the means value were reported in the table below.

CALIBRATION DATA

CORRECTION OF PRESSURE

DUC Test point (inHg)	STD Reading (kPa)		Conversion to inHg		Correction (inHg)	
	Up	Down	Up	Down	Up	Down
0	0.00	0.00	0.0	0.0	0.0	0.0
-5	-15.58	-15.58	-4.6	-4.6	+0.4	+0.4
-10	-32.51	-32.84	-9.6	-9.7	+0.4	+0.3
-15	-49.44	-49.77	-14.6	-14.7	+0.4	+0.3
-20	-66.70	-66.70	-19.7	-19.7	+0.3	+0.3
-25	-83.63	-83.97	-24.7	-24.8	+0.3	+0.2
-30	-100.90	-100.90	-29.8	-29.8	+0.2	+0.2

Uncertainty of measurement ± 0.2 inHg

Transmitting fluid : Air.

Technical Note. Conversion factor 1 kPa ; 0.2953003 inHg

Note. The Scope of Accredited ANAB Certificate No. ACDM-2814 Version 012 Page 43 of 67

This report is valid for the above stated instrument/s only.

End of Certificate

Certificate No. Q24076545

F3-011-05/12-23

page 3 of 3



@clccalibration



บริษัท เอส.พี.เอส. คอนซัลติ้ง เซอร์วิส จำกัด
S.P.S. CONSULTING SERVICE CO., LTD.
7 ซอยพหลโยธิน 24 แขวงจตุจักร เขตจตุจักร กรุงเทพฯ 10900
7 Soi Phaholyothin Rd., Jompol, Chatuchak, Bangkok 10900
Tel : (662) 939-4370-72 Fax : (662) 513-4221 E-mail : sale@spscon.com, www.spscon.com

Personal Pump Calibration Report

Calibration Method : Dry Cal Primary Flowmeter

Model : Defender 510-H

S/N : 136164

Environmental Conditions
Temperature : 25 \pm 3 $^{\circ}$ C
Pressure : 1010 \pm 15 mmbar

Personal Pump Data					Calibration Data							
No.	Brand	Model	Serial No.	Date	Flow Rate (mL/min)						Value From Calibration Curve	
					Setting			Actual (Q std.)				
					1	2	3	1	2	3	y	R ²
B41	SKC	224-PCXR4	612669	03/04/2025	1,000	1,500	2,000	1,005	1,502	2,004	1.005x - 8.923	1.000
B42	SKC	224-PCXR4	626041	03/04/2025	1,000	1,500	2,000	1,004	1,501	2,008	1.009x - 13.856	1.000
B43	SKC	224-PCXR4	034636	01/04/2025	1,000	1,500	2,000	1,012	1,497	1,996	0.990x + 15.132	1.000
B44	SKC	224-PCXR8	529341	01/04/2025	1,000	1,500	2,000	1,011	1,511	2,008	1.002x - 0.860	0.999
B45	SKC	224-PCXR8	529594	04/04/2025	1,000	1,500	2,000	993	1,512	2,003	1.009x - 14.476	1.000
B46	SKC	224-PCXR8	566743	04/04/2025	1,000	1,500	2,000	1,008	1,508	2,008	1.000x - 0.100	0.999
B47	SKC	224-PCXR8	566747	04/04/2025	1,000	1,500	2,000	999	1,510	2,010	1.010x - 14.444	1.000
B48	SKC	224-PCXR8	566753	01/04/2025	1,000	1,500	2,000	1,010	1,506	2,006	0.999x + 2.782	1.000
B49	SKC	224-PCXR8	566780	04/04/2025	1,000	1,500	2,000	1,003	1,504	2,004	1.003x - 2.183	1.000
B50	SKC	224-PCXR8	500400	04/04/2025	1,000	1,500	2,000	1,002	1,493	1,995	0.994x + 5.841	1.000
B51	SKC	224-PCXR8	500363	04/04/2025	1,000	1,500	2,000	998	1,511	2,011	1.013x - 19.465	0.999
B52	SKC	224-PCXR8	093186	02/04/2025	1,000	1,500	2,000	997	1,505	2,006	1.008x - 12.641	1.000
B53	SKC	224-PCXR8	707670	02/04/2025	1,000	1,500	2,000	1,004	1,503	2,007	1.007x - 7.992	1.000
B54	SKC	224-PCXR3	509821	02/04/2025	1,000	1,500	2,000	1,005	1,504	2,008	1.010x - 15.060	0.999
B55	SKC	224-PCXR3	510710	02/04/2025	1,000	1,500	2,000	1,001	1,495	1,997	0.996x + 5.073	1.000
B56	SKC	224-PCXR3	511450	02/04/2025	1,000	1,500	2,000	1,005	1,494	1,996	0.991x - 13.385	1.000
B57	SKC	224-PCXR3	510798	03/04/2025	1,000	1,500	2,000	997	1,511	2,009	1.014x - 21.540	0.999
B58	SKC	224-PCXR3	509852	03/04/2025	1,000	1,500	2,000	1,006	1,493	2,002	1.001x - 4.094	1.000
B59	SKC	224-PCXR3	509862	03/04/2025	1,000	1,500	2,000	995	1,502	2,003	1.012x - 21.564	1.000
B60	SKC	224-PCXR3	512655	03/04/2025	1,000	1,500	2,000	998	1,507	2,004	1.010x - 18.510	0.999
B61	SKC	224-PCXR3	503915	03/04/2025	1,000	1,500	2,000	997	1,499	2,001	1.002x - 4.374	1.000
B62	SKC	224-PCXR3	505975	01/04/2025	1,000	1,500	2,000	1,002	1,503	2,005	1.008x - 11.138	1.000
B63	SKC	224-PCXR3	511432	04/04/2025	1,000	1,500	2,000	998	1,502	1,996	0.996x + 3.970	1.000
B64	SKC	224-PCXR3	508302	04/04/2025	1,000	1,500	2,000	1,005	1,509	2,008	1.009x - 10.402	1.000
B65	SKC	224-PCXR3	508310	04/04/2025	1,000	1,500	2,000	1,004	1,503	2,007	1.010x - 14.088	1.000
B66	SKC	224-PCXR3	509861	04/04/2025	1,000	1,500	2,000	1,003	1,504	2,010	1.008x - 12.369	1.000
B67	SKC	224-PCXR3	506295	04/04/2025	1,000	1,500	2,000	1,002	1,498	2,004	0.998x + 4.290	1.000
B68	SKC	224-PCXR3	505872	04/04/2025	1,000	1,500	2,000	999	1,504	1,998	1.000x + 0.436	1.000
B69	SKC	224-PCXR3	508375	02/04/2025	1,000	1,500	2,000	1,004	1,498	2,002	0.996x + 5.501	1.000
B70	SKC	224-PCXR3	510623	02/04/2025	1,000	1,500	2,000	996	1,497	2,005	1.005x - 8.735	1.000
B71	SKC	224-PCXR3	508367	02/04/2025	1,000	1,500	2,000	1,013	1,505	2,009	1.000x + 3.294	0.999
B72	SKC	224-PCXR3	505977	02/04/2025	1,000	1,500	2,000	997	1,494	2,003	1.006x - 11.350	1.000
B73	SKC	224-PCXR3	512606	01/04/2025	1,000	1,500	2,000	1,010	1,507	2,004	0.998x + 5.129	1.000
B74	SKC	224-PCXR3	505993	01/04/2025	1,000	1,500	2,000	998	1,499	2,010	1.009x - 11.942	1.000
B75	SKC	224-PCXR3	509820	01/04/2025	1,000	1,500	2,000	995	1,511	2,004	1.011x - 18.966	0.999
B76	SKC	224-PCXR3	509811	01/04/2025	1,000	1,500	2,000	998	1,504	2,010	1.012x - 20.993	0.999
B77	SKC	224-PCXR3	508301	03/04/2025	1,000	1,500	2,000	1,007	1,509	2,008	1.001x + 3.750	1.000
B78	SKC	224-PCXR3	510677	04/04/2025	1,000	1,500	2,000	998	1,508	2,001	1.003x - 3.278	1.000
B79	SKC	224-PCXR3	510920	04/04/2025	1,000	1,500	2,000	1,001	1,501	1,994	0.999x - 1.819	1.000

Calibrated by :

Abul Dangkron
(Mr. Abul Dangkron)

Approved by :

(Mr. Peera Detudom)



บริษัท เอส.พี.เอส. คอนซัลติ้ง เซอร์วิส จำกัด
S.P.S. CONSULTING SERVICE CO., LTD.
7 ซอยพหลโยธิน 24 ถนนพหลโยธิน แขวงจอมพล เขตจตุจักร กรุงเทพฯ 10900
7 Soi Phaholyothin 24, Phaholyothin Rd., Jompol, Chatuchak, Bangkok 10900
Tel : (662) 939-4370-72, Fax : (662) 513-4221, E-mail : sale@spscon.com, www.spscon.com

Rotameter Calibration Report (For Personal Pump Low Flow Adjust)

Calibration Method : Dry Cal Primary Flowmeter

Model : Defender 510-H

S/N : 136164

Calibration Data

Rotameter Data			Date	Calibration Data								
No.	Brand	Model		Flow Rate (mL/min)						Value From Calibration Curve		
				Flow Rate (Reading)			Actual (Q std.)					
				1	2	3	1	2	3	y	R ²	
L-R01	Dwyer	VFA-21	02/04/2025	50	100	200	50.7	101.0	199.3	0.995x + 1.197	1.000	
L-R02	Dwyer	VFA-21	02/04/2025	50	100	200	49.8	100.7	199.1	1.001x - 0.303	1.000	
L-R03	Dwyer	VFA-21	01/04/2025	50	100	200	50.1	101.2	200.9	1.005x - 0.447	0.999	
L-R04	Dwyer	VFA-21	04/04/2025	50	100	200	50.2	100.9	201.5	0.994x + 1.311	1.000	
L-R05	Dwyer	VFA-21	04/04/2025	50	100	200	50.4	100.7	201.6	0.999x + 0.781	1.000	
L-R06	Dwyer	VFA-21	03/04/2025	50	100	200	49.8	101.2	201.8	1.003x - 0.149	0.999	

Calibrated by :

Adul Dangklom
(Mr. Adul Dangklom)

Approved by :

(Mr. Peera Detudom)



QUALITY CALIBRATION CO., LTD.
235 Petchkasem 63/2 Road, Laksong, Bangkae, Bangkok 10160
Tel (662) 421-5402, (662) 444-0152-3, Fax (662) 809-4584
www.qcalibration.com



CERTIFICATE No : 25M2254
REFERENCE No : 76365-1

PAGE : 1 OF 2

Certificate of Calibration

EQUIPMENT : DIGITAL BALANCE
MANUFACTURER : METTLER TOLEDO
MODEL : XS105DU
SERIAL No : 1126422905
ID No : BA05/50
CONDITION AS RECEIVED : USED ITEM
SUBMITTED BY : S.P.S. CONSULTING SERVICE CO., LTD.
7 SOI PHAHOLYOTHIN 24, PHAHOLYOTHIN RD.,
JOMPOL, CHATUCHAK, BANGKOK 10900

CALIBRATED BY : ATSAWIN Y.

CALIBRATION DATE : 07-Mar-25

APPROVED BY : PONGSAK J.

ISSUED DATE : 13-Mar-25

RECEIVED DATE : 07-Mar-25

THIS CERTIFICATE MAY NOT BE REPRODUCED OTHER THAN IN FULL EXCEPT WITH THE PRIOR WRITTEN APPROVAL OF
QUALITY CALIBRATION CO., LTD.





QUALITY CALIBRATION CO.,LTD.

235 Petchkasem 63/2 Road, Laksong, Bangkai, Bangkok 10160

Tel (662) 421-5402, (662) 444-0152-3, Fax (662) 809-4584

www.qcalibration.com

CERTIFICATE No : 25M2254

PAGE : 2 OF 2

Calibration Report

EQUIPMENT : DIGITAL BALANCE
MANUFACTURER : METTLER TOLEDO
ID No : BA05/50
AIR PRESSURE : 1009mbar \pm 1mbar
AMBIENT TEMPERATURE : 24°C \pm 1°C
MODEL : XS105DU
S/N : 1126422905
RECEIVED DATE : 07-Mar-25
CALIBRATION DATE : 07-Mar-25
RELATIVE HUMIDITY : 54 %RH \pm 10 % RH

CONDITION OF THIS RESULTS OF CALIBRATION

1. THIS INSTRUMENT WAS CALIBRATED BY ACCORDING TO UKAS LAB 14 EDITION 6:2019 BY USING KNOWN WEIGHT STANDARD WEIGHT. THE BALANCE WAS NOT ADJUSTED BEFORE CALIBRATION. THE BALANCE HAS NO ZERO TRACKING FUNCTION. REPEATABILITY WAS MEASURED BY USING 10 REPEATED MEASUREMENTS. LINEARITY WAS MEASURED COVERING 10 POINTS, EVENLY SPREAD OVER THE RANGE. THE INSTRUMENT WAS SET ZERO BEFORE PERFORMING THE LINEARITY TEST. OFF-CENTER LOADING WAS MEASURED BY USING STANDARD WEIGHTS PLACED ON THE PAN AND MOVED TO VARIOUS POSITIONS ON THE PAN.

2. REFERENCE STANDARD INSTRUMENTS :-

INSTRUMENT	MODEL	SERIAL No	CERTIFICATE No	DUE DATE
1) STANDARD WEIGHT SET	E2	QK-I-151	C02250116	28-Jan-27
2) STANDARD WEIGHT	E2	15843	C02250117	29-Jan-27

3. THE CERTIFICATE IS VALID FOR THE ITEM CALIBRATED AS SHOWN ON THE DATE AND PLACE OF CALIBRATION ONLY.

4. THIS RESULT EXCLUDE LONG TERM STABILITY OF THE UNIT UNDER CALIBRATION.

5. THIS CERTIFICATE IS TRACEABLE TO THE INTERNATIONAL SYSTEM OF UNIT MAINTAINED AT:-

- NATIONAL INSTITUTE OF METROLOGY (THAILAND)

RESULT OF CALIBRATION :- WITHOUT ADJUSTMENT

1. ZERO SETTING FUNCTION : NORMAL

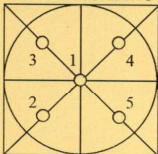
2. TARE FUNCTION : NORMAL

3. REPEATABILITY OF READING AT 120 g WAS 0.000055 g

4. DEPARTURE FROM NOMINAL VALUE/ LINEARITY

NOMINAL VALUE (g)	BALANCE READING (g)	CORRECTION (g)	UNCERTAINTY (\pm g)
0.00	0.00000	0.00000	0.000065
0.02	0.01999	0.00001	0.000065
0.10	0.10001	-0.00001	0.000066
0.20	0.20001	-0.00001	0.000066
0.50	0.50002	-0.00002	0.000065
1.00	1.00003	-0.00003	0.000066
2.00	2.00001	-0.00001	0.000067
5.00	5.00002	-0.00002	0.000068
10.00	10.00000	0.00000	0.000070
20.00	20.00004	-0.00004	0.000078
50.00	50.00000	0.00000	0.00013
100.00	100.0001	-0.0001	0.00019
120.00	120.0002	-0.0002	0.00022

5. OFF CENTER LOADING ERROR



POINT	READING (g)
1	50.0000
2	50.0000
3	50.0000
4	50.0000
5	50.0000
OFF-CENTER LOADING	0.0000

NOTE: THIS CALIBRATION WAS CARRIED OUT AT THE CUSTOMER'S PLACE AT LABORATORY AREA
THE REPORTED UNCERTAINTY OF MEASUREMENT WAS BASED ON A STANDARD UNCERTAINTY MULTIPLIED BY A COVERAGE FACTOR $k=2$, PROVIDING A LEVEL OF CONFIDENCE APPROXIMATELY 95%.

END OF CALIBRATION REPORT



F-G010 REV 03

SITHIPHORN ASSOCIATES CO., LTD. CALIBRATION LABORATORY

451-451/1 Sirinthon Road, Bangbunru, Bangplud, Bangkok, 10700 Thailand

Tel. +66 2433 8331

Email : calibration@sithiphorn.com

SITHIPHORN
associates



Cert. No. : SP24020

Pages : 1 of 3

Calibration Certificate

Equipment : UV-VIS SPECTROPHOTOMETER
Manufacturer : PERKINELMER
Model : LAMBDA 25
Serial No.: 501S14123010
ID No.: SP03/58
Calibration Mode : WAVELENGTH ACCURACY
PHOTOMETRIC ACCURACY

Condition As Found : GOOD

Customer : S.P.S. CONSULTING SERVICE CO., LTD.
7 SOI PHAHOLYOTHIN 24, PHAHOLYOTHIN ROAD,
CHOMPHON, CHATUCHAK,
BANGKOK 10900, THAILAND.

Location : WET CHEMISTRY LABORATORY IV

Ambient Temperature : (28.1 \pm 5) °C

Relative Humidity : (47.2 \pm 25) %

Received Date : 27 AUGUST 2024

Calibration Date : 27 AUGUST 2024

Date of Issue : 27 AUGUST 2024

Calibrated by : Nathakorn Pisutpaisan

Approved by :

T. Petchurai
(Thanakul Petchurai)

This certificate is issued in accordance with the requirements of ISO/IEC 17025 standard, may not be reproduced other than in full, except with the prior written approval of the head of Calibration Laboratory.

SITHIPORN ASSOCIATES CO., LTD. CALIBRATION LABORATORY

451-451/1 Sirinthorn Road, Bangbunru, Bangplud, Bangkok, 10700 Thailand
Tel. +66 2433 8331 Email : calibration@sithiphorn.com



Cert. No. : SP24020
Job No. : VC67SP0013
Pages : 2 of 3

Calibration Method :

This instrument was calibrated by using on-site calibration procedure In-house method : CP-SP-01
The calibration procedure to direct measurement wavelength accuracy by using wavelength standard solution, Photometric accuracy by using absorbance standard filter and absorbance standard solution
The calibration procedure used was based on ASTM E275-01, ASTM E925-02

Condition of this result of calibration :

1. Certified reference materials

Material	Ref. type	Cell serial No.	Cert. No.	Due Date
Holmium liquid	RM-HL	29706	106864	01/11/2024
Didymium liquid	RM-DL	28912	106905	02/11/2024
Neutral density filter	RM-1N2N3N	13877	106918	03/11/2024
Potassium dichromate solutions	RM-0204060810	14204	106902	02/11/2024
Potassium Iodide solution	-	KI-0701-001	CI-0185-24	14/05/2026

2. This result of calibration was found accurate as shown on date and place of calibration only.

3. This certificate is traceable to the international system of unit maintained at :

- 3.1 The UK National Physical Laboratory (NPL)
- 3.2 The National Institute of Standards and Technology, NIST.

Result of calibration : Wavelength Accuracy

(Without adjustment)

Material	Certified Values of Reference Material (nm)	UUC* Reading (nm)	Error (nm)	Uncertainty ± (nm)	k Factor
RM-HL	278.13	278.3	0.17	0.16	2.00
	361.25	361.4	0.15	0.16	2.00
	467.82	467.7	-0.12	0.16	2.00
	536.56	536.5	-0.06	0.16	2.00
	640.50	640.4	-0.10	0.16	2.00
RM-DL	740.09	739.9	-0.19	0.16	2.00
	864.94	865.2	0.26	0.16	2.00

UUC* = Unit Under Calibration

Peter

SITHIPORN ASSOCIATES CO., LTD. CALIBRATION LABORATORY

451-451/1 Sirinthorn Road, Bangbunru, Bangplud, Bangkok, 10700 Thailand
Tel. +66 2433 8331 Email : calibration@sithiphorn.com



Cert. No. : SP24020
Job No. : VC67SP0013
Pages : 3 of 3

Result of calibration : Photometric Accuracy

(Without adjustment)

Material	Wavelength (nm)	Filter S/N	Nominal Absorbance (A)	Certified Absorbance (A)	UUC* Reading Absorbance (A)	Error (A)	Uncertainty ± (A)	k Factor
Neutral Density glass filter	440.0	29360	1.0	1.0517	1.0550	0.0033	0.0029	2.00
		29914	0.7	0.7445	0.7460	0.0015	0.0029	2.00
		29381	0.5	0.5416	0.5431	0.0015	0.0030	2.00
	546.1	29360	1.0	0.9821	0.9820	-0.0001	0.0028	2.00
		29914	0.7	0.6961	0.6958	-0.0003	0.0028	2.00
		29381	0.5	0.5073	0.5080	0.0007	0.0029	2.00
	590.0	29360	1.0	1.0222	1.0210	-0.0012	0.0028	2.00
		29914	0.7	0.7237	0.7221	-0.0016	0.0029	2.00
		29381	0.5	0.5361	0.5361	0.0000	0.0031	2.00
	635.0	29360	1.0	0.9753	0.9745	-0.0008	0.0028	2.00
		29914	0.7	0.6910	0.6900	-0.0010	0.0029	2.00
		29381	0.5	0.5211	0.5210	-0.0001	0.0032	2.00
RM-0204060810	235.0	20		0.2422	0.2418	-0.0004	0.0101	2.00
		40		0.4866	0.4852	-0.0014	0.0115	2.00
		60		0.7414	0.7389	-0.0025	0.0067	2.00
		80		0.9858	0.9842	-0.0016	0.0093	2.00
	100			1.2442	1.2414	-0.0028	0.0086	2.00

UUC* = Unit Under Calibration

Condition of this result of calibration : Spectrophotometer PERKINELMER Model Lambda 25 S/N 501S14123010

Resolution of Wavelength Mode	0.1 nm
Resolution of Photometric Mode	0.0001 A
Parameter Setting	
Measurement Mode	Wavelength, Absorbance
Wavelength Scan	1100 nm-190 nm
Scanning Speed	7.5 nm/min
Data Pitch	0.1 nm
Band width(Wavelength)	1.0 nm
Band width(Vis)	1.0 nm
Band width(Uv)	1.0 nm

Stray Light** UUC* Reading at 220 nm	
Transmission T(%)	Absorbance(A)
0.0117	3.8659

**Specific Acceptance :

Transmission ≤ 1.0 T(%), Absorbance ≥ 2.0 A

**Stray light not TISI Accredited

The reported uncertainty is based on a standard uncertainty multiplied by a coverage factor *k*, providing a level of confidence of approximately 95%

End of Calibration Certificate

Peter



GAS CHROMATOGRAPH TEST CERTIFICATION

Certificate No. : SV0824/22063

Instrument Type : Gas Chromatography

Model : CP-3800

Serial Number : 00734

Organization : S.P.S. Consulting Service Co., Ltd.

Address : 7 Phahonyothin Soi 24 Phahonyothin Rd. Ladyao Chatuchak Bangkok 10900

Date : 05/08/2024

ELECTRONIC TEST

CPU	<input checked="" type="checkbox"/> PASS	<input type="checkbox"/> FAIL
LCD TEST	<input checked="" type="checkbox"/> PASS	<input type="checkbox"/> FAIL
VENT TEST	<input checked="" type="checkbox"/> PASS	<input type="checkbox"/> FAIL
KEY ECHO TEST	<input checked="" type="checkbox"/> PASS	<input type="checkbox"/> FAIL
DESTRUCTION RAM TEST	<input checked="" type="checkbox"/> PASS	<input type="checkbox"/> FAIL

RUN CHROMATOGRAM TEST

DETECTOR : Flame Ionization Detector (FID Channel Front)

INJECTOR : Capillary Injector Model 1079

GC CONDITION:

Column	80 °C hold 1 min., rate 20 °C/min. to 200 °C hold 1min.
Injector	220 °C
Detector	300 °C
Column flow	5 mL/min
Makeup flow	25 mL/min
Air flow	300 mL/min
Hydrogen flow	30 mL/min

Column:Capillary Column CP sil 5 CB 0.25 ID x 15 M

Sample: 1 µL Injection FID Test Sample 0.218 g/L C14,C15,C16 in hexane

SENSITIVITY TEST: C15. (Area count) = 156,955 Counts.



Detector Sensitivity (FID)

Detector Response	Result	Specification
Baseline Noise (µV)	2.85	≤ 50
Baseline Drift (%)	0.09	≤ 1
Sensitivity (S/N for C15)	16,400	≥ 1,024

Temperature Specification

Temperature	Set	Result	Specification
Column Oven (° C)	80	80	± 5
Injector (° C)	220	220	± 5
Detector (° C)	300	300	± 5
Incubator (° C)	60	N/A	± 5

Relative Standard Deviation % (% RSD)

Checkout Procedure	Result	Specification
Area C15 (%)	1.71	≤ 5
Retention Time C15(%)	0	≤ 0.5

APPROVAL :

Signature: Suwarot

Engineer : Suwarot Trikanut

Date : 05/08/2024



VARIAN

1/2

SERVICE DEPARTMENT

FR-SV-029 Rev. 04



VARIAN

2/2

SERVICE DEPARTMENT

FR-SV-029 Rev. 04



บริษัท ไทยยูนิค จำกัด

THAI UNIQUE CO., LTD.

80-82 ถนนประชาธิปไตย แขวงบางขุนพรหม เขตพระนคร กรุงเทพฯ 10200

80-82 Prachathipatai Rd., Bangkhunphrom, Pranakorn, Bangkok 10200

Tel. 0-2629-0191-6, 0-2280-1787, Fax. 0-2280-1788, E-mail : thawatt@thaiunique.com, Website : www.thaiunique.com

Results Integrated System Testing

Checkout Procedure	FID
Detector Position	Front
Inlet Type	1079 Injector
C15 Area 1	157,309
C15 Area 2	159,359
C15 Area 3	157,349
C15 Area 4	152,379
C15 Area 5	158,379
C15 Area Average	156,955
* % RSD (< 5 %)	1.71

* The precision specification should be less than 2.0 % RSD ** (Relative Standard Deviation) for an Auto sampler injection and less than 5 % for Manual injections. To calculate the %RSD, select the C15 peak area for each of the five (5) samples.

** (Relative Standard Deviation is determined by dividing the standard deviation by the average and multiplying by 100.)

$$\% \text{ RSD} = (\text{std.dev} / \text{avg}) * 100$$

Compliance	<input checked="" type="checkbox"/> Pass	<input type="checkbox"/> Fail
Performance by	Samarot.	
Date	05/08/2567	



Comments	-		
Reviewed by	Samarot P.	Date	05/08/2024



บริษัท ไทยยูนิค จำกัด

THAI UNIQUE CO., LTD.

80-82 ถนนประชาธิปไตย แขวงบางขุนพรหม เขตพระนคร กรุงเทพฯ 10200

80-82 Prachathipatai Rd., Bangkhunphrom, Pranakorn, Bangkok 10200

Tel. 0-2629-0191-6, 0-2280-1787, Fax. 0-2280-1788, E-mail : thawatt@thaiunique.com, Website : www.thaiunique.com

Results Integrated System Testing

Checkout Procedure	FID
Detector Position	Front
Inlet Type	1079 Injector
C15 RT 1	4.128
C15 RT 2	4.128
C15 RT 3	4.128
C15 RT 4	4.128
C15 RT 5	4.128
C15 RT Average	4.128
* % RSD (< 0.5 %)	0

* The precision specification should be less than 0.5 % RSD ** (Relative Standard Deviation) for an Auto sampler injection and less than 0.5 % for Manual injections. To calculate the %RSD, select the RT C15 peak for each of the five (5) samples.

** (Relative Standard Deviation is determined by dividing the standard deviation by the average and multiplying by 100.)

$$\% \text{ RSD} = (\text{std.dev} / \text{avg}) * 100$$

Compliance	<input checked="" type="checkbox"/> Pass	<input type="checkbox"/> Fail
Performance by	Samarot.	
Date	05/08/2024	



Comments	-		
Reviewed by	Samarot P.	Date	05/08/2024



VARIAN

1/1

SERVICE DEPARTMENT



VARIAN

1/1

SERVICE DEPARTMENT

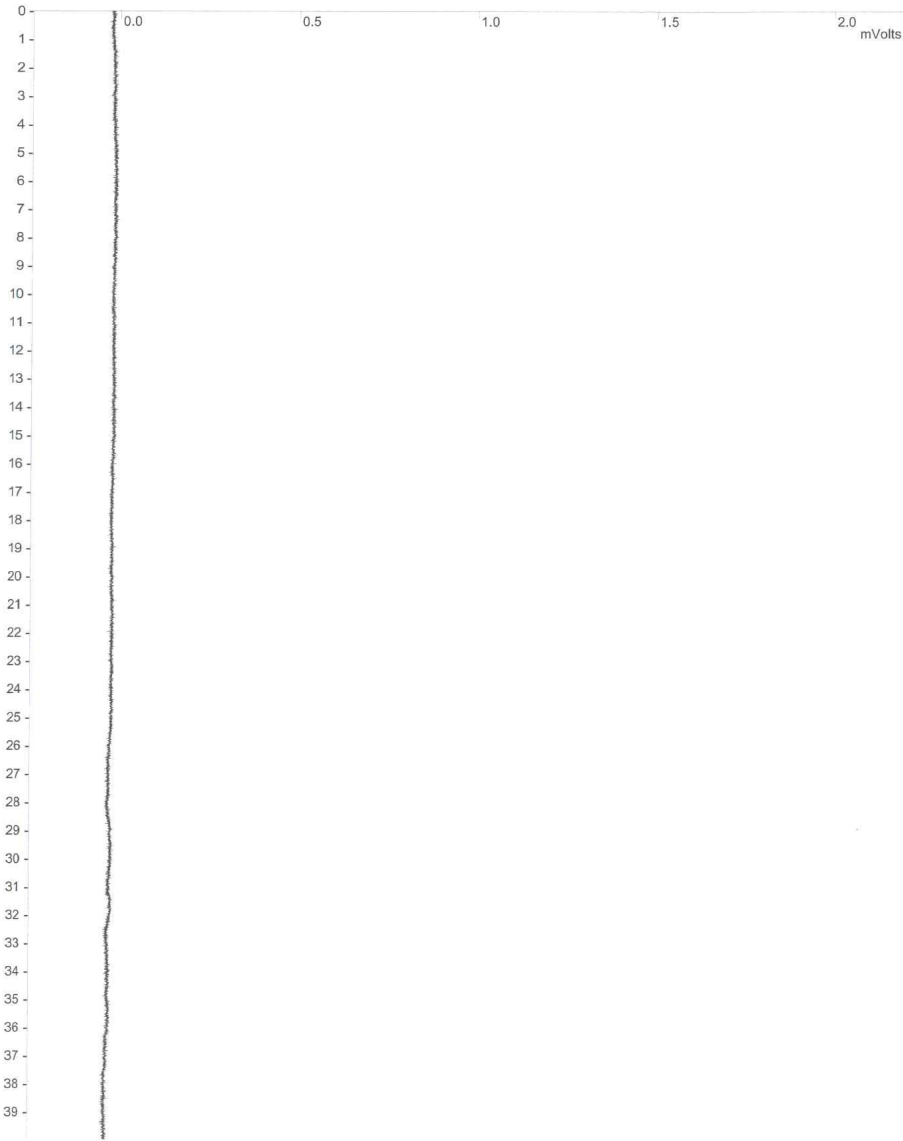
Title :
Run File : f:\sps2024\cal2024\baseline2024002.run
Method File : D:\Method-GC\star C\Star\TU\cal0203\baseline FID.mth
Sample ID : Baseline2024

Injection Date: 5/8/2567 14:01 Calculation Date: 5/8/2567 14:41

Operator : watsamon Detector Type: 3800 (10 Volts)
Workstation: Local Disk Bus Address : 44
Instrument : Sample Rate : 10.00 Hz
Channel : Front = FID Run Time : 39.960 min

** LC Workstation Version 6.20 ** 02511-7390-ae7-0265 **

Chart Speed = 0.56 cm/min Attenuation = 1 Zero Offset = 10%
Start Time = 0.000 min End Time = 39.960 min Min / Tick = 1.00



Title :
Run File : f:\sps2024\cal2024\baseline2024002.run
Method File : D:\Method-GC\star C\Star\TU\cal0203\baseline FID.mth
Sample ID : Baseline2024

Injection Date: 5/8/2567 14:01 Calculation Date: 5/8/2567 14:41

Operator : suwarot Detector Type: 3800 (10 Volts)
Workstation: Local Disk Bus Address : 44
Instrument : Sample Rate : 10.00 Hz
Channel : Front = FID Run Time : 39.960 min

** LC Workstation Version 6.20 ** 02511-7390-ae7-0265 **

Run Mode : Analysis
Peak Measurement: Peak Area
Calculation Type: External Standard

Peak No.	Peak Name	Result ()	Ret. Time (min)	Time Offset (min)	Area (counts)	Sep. Code	Width 1/2 (sec)	Status Codes
Totals:		0.0000		0.000	0			

Total Unidentified Counts : 0 counts
Detected Peaks: 0 Rejected Peaks: 0 Identified Peaks: 0
Multiplier: 1 Divisor: 1 Unidentified Peak Factor: 0
Baseline Offset: -16 microVolts LSB: 1 microVolts
Noise (used): 22 microVolts - monitored before this run
Manual injection
Data Handling: No peaks

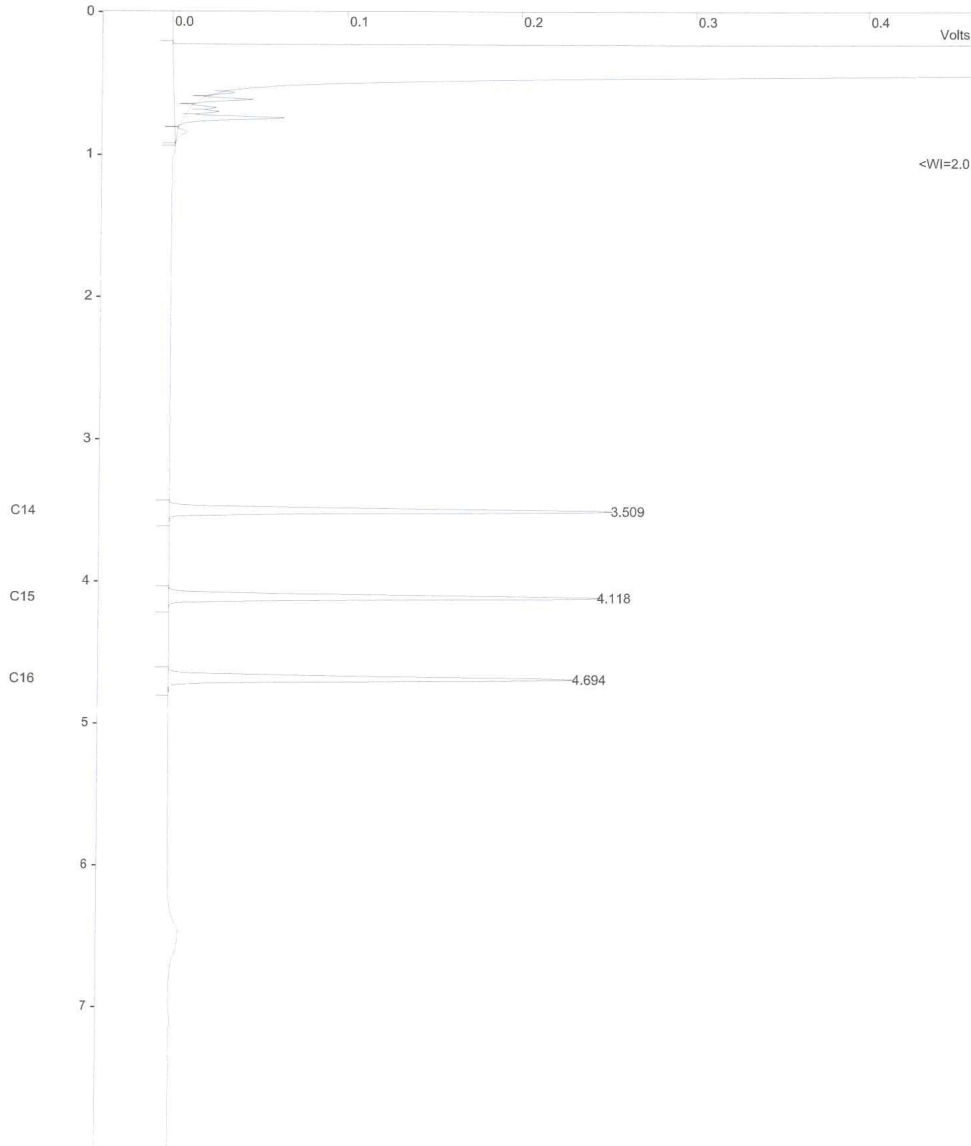
Title :
Run File : f:\sps2024\cal2024\fid2024003.run
Method File : d:\cafid2024003-front.mth
Sample ID : FID2024

Injection Date: 5/8/2567 9:16 Calculation Date: 5/8/2567 9:26

Operator : suwarot Detector Type: 3800 (10 Volts)
Workstation: GC-LAB Bus Address : 44
Instrument : Sample Rate : 10.00 Hz
Channel : Front = FID Run Time : 7.993 min

** LC Workstation Version 6.20 ** 02511-7390-ae7-0265 **

Chart Speed = 2.83 cm/min Attenuation = 205 Zero Offset = 8%
Start Time = 0.000 min End Time = 7.993 min Min / Tick = 1.00



Print Date: Sat Jan 01 19:35:30 2005 Page 1 of 1

Title :
Run File : f:\sps2024\cal2024\fid2024003.run
Method File : d:\fid2024003-front.mth
Sample ID : FID2024

Injection Date: 5/8/2567 9:16 Calculation Date: 5/8/2567 9:26

Operator : suwarot Detector Type: 3800 (10 Volts)
Workstation: GC-LAB Bus Address : 44
Instrument : Sample Rate : 10.00 Hz
Channel : Front = FID Run Time : 7.993 min

** LC Workstation Version 6.20 ** 02511-7390-ae7-0265 **

Run Mode : Analysis
Peak Measurement: Peak Area
Calculation Type: External Standard

Peak No.	Peak Name	Result ()	Ret. Time (min)	Time Offset (min)	Area (counts)	Sep. Code	Width 1/2 (sec)	Status Codes
1	C14	54.1202	3.509	-0.005	163565	BB	2.1	C
2	C15	53.5241	4.118	-0.005	157309	BB	2.2	C
3	C16	52.2361	4.694	0.001	146804	BB	2.3	C
Totals:		159.8804		-0.009	1704289			

Status Codes:
C - Out of calibration range

Total Unidentified Counts : 69332200 counts

Detected Peaks: 11 Rejected Peaks: 0 Identified Peaks: 3

Multiplier: 1 Divisor: 1 Unidentified Peak Factor: 0

Baseline Offset: -29 microVolts LSB: 1 microVolts

Noise (used): 28 microVolts - monitored before this run

Manual injection

Calib. out of range; No Recovery Action Specified

Sample ID: **fid std**

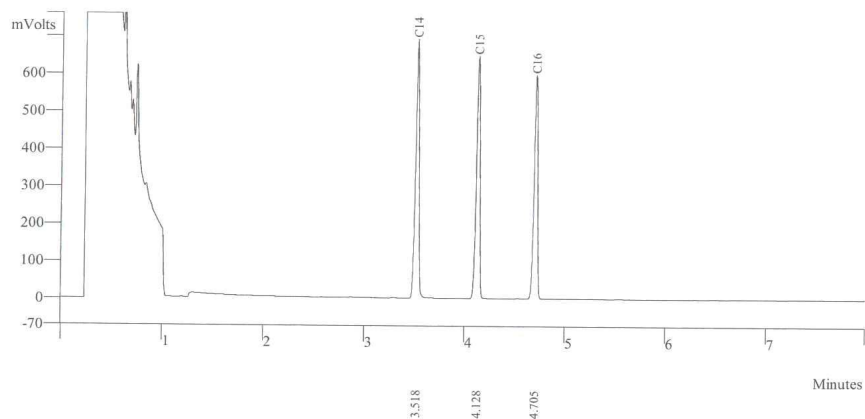
Operator (Inj): suwarot
Injection Date: 05/08/2024
Calc Date: 05/08/2024
Run Time (min): 7.993
Workstation: GC-LAB
Instrument (Inj):



Run Mode: Analysis
Peak Measurement: Peak Area
Calculation Type: External Std.

c:\star\data\tu\cal2024\fid2024001.run

A = FID 10 V RESULTS



Peak No	Peak Name	Result ()	Ret Time (min)	Peak Area (counts)	Sep. Code	Width 1/2 (sec)
1	C14	152.6865	3.518	163565	BB	2.2
2	C15	147.1889	4.128	157309	BB	2.3
3	C16	138.7997	4.705	146804	BB	2.3
Totals		438.6751		467678		

Sample ID: **fid std**

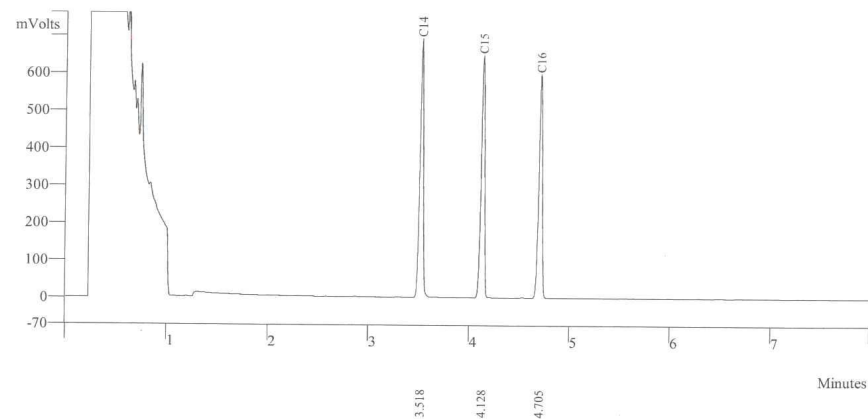
Operator (Inj): suwarot
Injection Date: 05/08/2024
Calc Date: 05/08/2024
Run Time (min): 7.993
Workstation: GC-LAB
Instrument (Inj):



Run Mode: Analysis
Peak Measurement: Peak Area
Calculation Type: External Std.

c:\star\data\tu\cal2024\fid2024002.run

A = FID 10 V RESULTS



Peak No	Peak Name	Result ()	Ret Time (min)	Peak Area (counts)	Sep. Code	Width 1/2 (sec)
1	C14	152.6865	3.518	168565	BB	2.2
2	C15	137.1189	4.128	159359	BB	2.3
3	C16	128.7997	4.705	147834	BB	2.3
Totals		418.6042		475758		



Sample ID: **fid std**

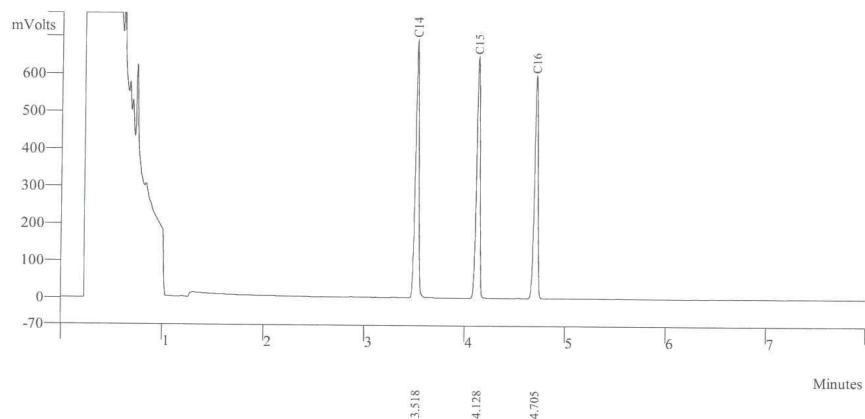
Operator (Inj): suwarot
Injection Date: 05/08/2024
Calc Date: 05/08/2024
Run Time (min): 7.993
Workstation: GC-LAB
Instrument (Inj):



Run Mode: Analysis
Peak Measurement: Peak Area
Calculation Type: External Std.

c:\star\data\tu\cal2024\fid2024003.run

A = FID 10 V RESULTS



Peak No	Peak Name	Result ()	Ret Time (min)	Peak Area (counts)	Sep. Code	Width 1/2 (sec)
1	C14	152.7865	3.518	169535	BB	2.2
2	C15	197.1159	4.128	157349	BB	2.3
3	C16	128.5997	4.705	149834	BB	2.3
Totals		478.5021		476718		

Sample ID: **fid std**

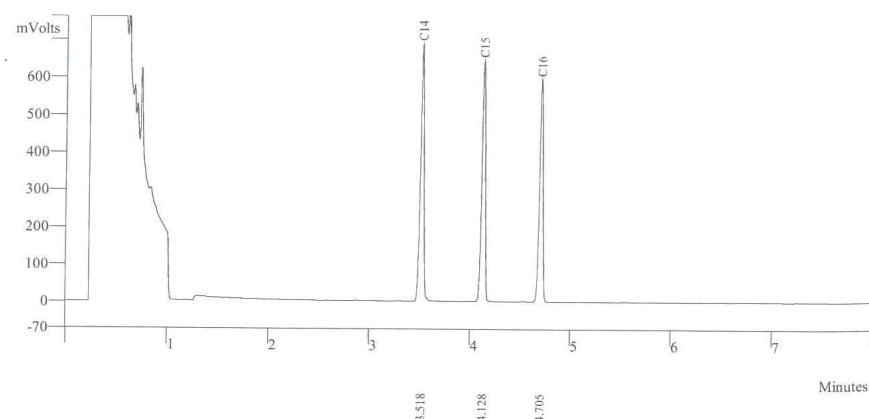
Operator (Inj): suwarot
Injection Date: 05/08/2024
Calc Date: 05/08/2024
Run Time (min): 7.993
Workstation: GC-LAB
Instrument (Inj):

**VARIAN**

Run Mode: Analysis
Peak Measurement: Peak Area
Calculation Type: External Std.

c:\star\data\tu\cal2024\fid2024004.run

A = FID 10 V RESULTS



Peak No	Peak Name	Result ()	Ret Time (min)	Peak Area (counts)	Sep. Code	Width 1/2 (sec)
1	C14	162.7865	3.518	165521	BB	2.2
2	C15	157.1159	4.128	152379	BB	2.3
3	C16	138.5997	4.705	146834	BB	2.3
Totals		458.5021		464734		



Sample ID: **fid std**

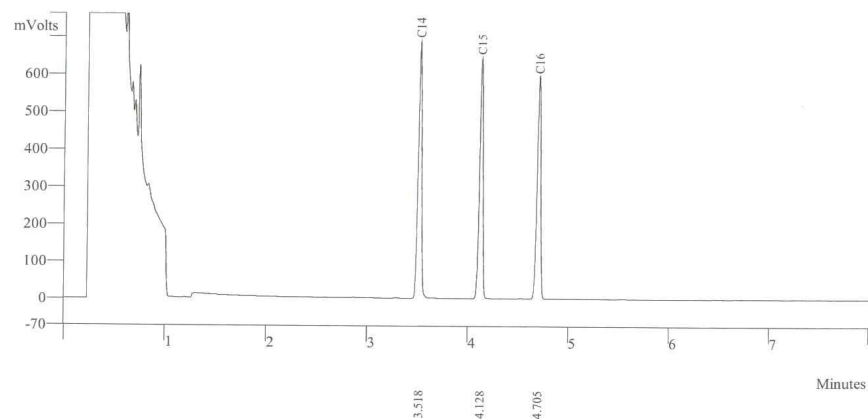
Operator (Inj): suwarot
 Injection Date: 05/08/2024
 Calc Date: 05/08/2024
 Run Time (min): 7.993
 Workstation: GC-LAB
 Instrument (Inj):



Run Mode: Analysis
 Peak Measurement: Peak Area
 Calculation Type: External Std.

c:\star\data\tu\cal2024\fid2024005.run

A = FID 10 V RESULTS



Peak No	Peak Name	Result ()	Ret Time (min)	Peak Area (counts)	Sep. Code	Width 1/2 (sec)
1	C14	162.7965	3.518	164521	BB	2.2
2	C15	137.1159	4.128	158379	BB	2.3
3	C16	128.1947	4.705	149834	BB	2.3
Totals		428.1071		472734		



THAI UNIQUE CO.,LTD.

1 Of 1



Agilent Technologies

Certificate of Analysis

FID-TCD Performance Evaluation Sample Kit

Agilent Part Number: 5080-8842, 18710-60170

Sample Lot Number: 0006750304

This analytical reference material was manufactured and verified in accordance with an ISO 9001 registered quality system, and the analyte concentrations were verified by an ISO 17025 accredited laboratory. The certified value for each analyte was determined gravimetrically.

Concentrations:		
n-tetradecane	0.218 g/L ($\pm 0.5\%$)	0.033 w/w %
n-pentadecane	0.218 g/L ($\pm 0.5\%$)	0.033 w/w %
n-hexadecane	0.218 g/L ($\pm 0.5\%$)	0.033 w/w %

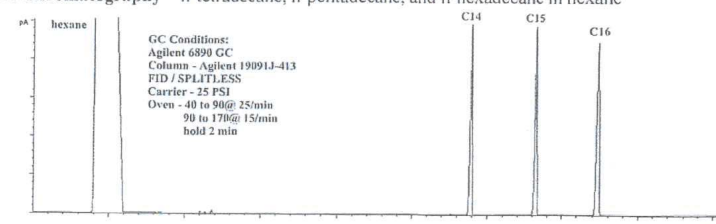
Solvent: hexane

Calibrated Class A glassware and clean bottles were used in the manufacture of this standard. Balances used in the manufacture of this standard are calibrated with weights traceable to NIST in compliance with ANSI/NCCL Z-540-1 and ISO 9001.

Purities:	
n-tetradecane	99.6%
n-pentadecane	99%
n-hexadecane	99.5%
hexane	99%

Typical Analytical Spectrum or Chromatography

GC Chromatography – n-tetradecane, n-pentadecane, and n-hexadecane in hexane



Date of release: 30 June 2023

Date of expiration: 31 July 2025

Monica Bourgeois
 Monica Bourgeois
 QMS Representative

Certificate of Calibration

Certificate No.: WK2312-031-1

Page 1 of 2

Customer : THAI UNIQUE CO., LTD.
80-82 PRACHATHIPATAI RD., BANGKHUNPHROM,
PRANAKORN, BANGKOK 10200

Instrument	: AMD Flow Meter	Ambient Temperature	: (23 ± 2) °C
Manufacturer	: Agilent Technologies	Humidity	: (50 ± 15) %RH
Model	: G6691A	Received Date	: 6-Dec-23
Serial No.	: MY16470347	Calibrated Date	: 7-Dec-23
Identity No.	: SV-DF-001	Issued Date	: 12-Dec-23
Range	: 0 ml/min to 750 ml/min	Calibrated Location	: In Lab
Resolution	: See to data		
Calibration Method	: CP-WK-M10		

Reference standard instruments :

Instrument	Serial No.	Certificate No.	Due Date	Traceability to
Flow Calibrator	140215-134	L202304114-001	18-Apr-25	MIT
Primary Flow Calibrator	1107-S	WK2305-049-5	22-May-24	WK Electric Co.,Ltd.

MIT : Miracle International Technology Co.,Ltd.

This result calibrate was found accurate as shown on date place of calibrate only
This certificate is traceability to the International System of Unit (SI)

The reported uncertainty of measurement was based on a standard uncertainty multiplied by a coverage factor $k=2$, providing a level of confidence approximately 95%

Calibrated by : Mr.Taywanat Hansuwankul

Approved by :

Ms. Budsagorn Patcha

Authorized Signatory

This certificate may not be reproduced except in full unless permission for the reproduction has been obtained in writing from the laboratory.

Calibration Results

Certificate No. : WK2312-031-1

Page 2 of 2

Calibration Result of the Accuracy

Function : Flow Measurement
Range : 0 ml/min to 750 ml/min
Resolution : 0.01 / 0.1 / 1 ml/min

UUC Setting		STD Reading	Error	Uncertainty (±)	Tolerance Limit Values (ml/min)
Scale	ml/min				
0	0.00	0.00	0.00	3.3	-0.20 ~ 0.20
50	50.7	51.15	-0.45	3.3	48.80 ~ 51.20
300	300	300.4	-0.4	3.3	293.8 ~ 306.2
450	450	450.7	-0.7	3.3	440.8 ~ 459.2
550	550	549.5	0.5	3.3	533.5 ~ 566.5
650	650	649.3	0.7	3.3	630.5 ~ 669.5
700	700	699.2	0.8	3.3	679.0 ~ 721.0

(X) Without Adjustment () After Adjustment

This certificate may not be reproduced except in full unless permission for the reproduction has been obtained in writing from the laboratory.

**** End of Certificate****



Measuretronix Limited
2425/2 Lat Phrao Road, Saphan Song
Wangthonglang, Bangkok 10310, Thailand
Phone : 0-2514-1000, 0-2514-1234
Fax : 0-2514-0001, 0-2514-0003
Website : www.measuretronix.com



Certificate of Calibration

Certificate Number : LF24-0278
Equipment : Thermometer
Manufacturer : Fluke
Model : 51
Serial Number : 5910857
Asset Number : 5910857
Customer : Thai Unique Co., Ltd.
80-82 Prachathipatai Road,
Bangkhunphrom, Pranakorn,
Bangkok 10200
Date of Calibrate : 26-Jun-2024
Date of Issue : 27-Jun-2024

This calibration certificate documents the traceability to national standards, which realize the units of measurement according to the International System of Units (SI).

This calibration certificate applies only to the item identified and shall not be reproduced other than in full, without specific written approved by Measuretronix Cal-Lab. Calibration certificates without signature are not valid.

The measurements marked with an asterisk () in this certificate are outside our range of accreditation. They have been included for completeness.*

The Calibration interval (Cal.Due) is the responsibility of the end user.

Calibrated by

Nanthiya Ngampring
Mrs. Nanthiya Ngampring
Metrology Technician

Approved by

A. S.
Mrs. Arunee Bamrungtham
Cal-Lab Manager

Certificate No. : LF24-0278

Model : 51

Serial No. : 5910857

Page 1 of 3



Measuretronix Limited

Calibration Report

UUC : Fluke 51 Thermometer

Serial No. : 5910857

Asset No. : 5910857

Procedure : CP-LF-04:Rev.02

Note : Refer to Fluke 51,52 Operator's Manual Rev 1 3/86, Oct 1985

Certificate No. : LF24-0278

Report data type : As-Found

Date of Calibrate : 26-Jun-2024

Date of Receive : 17-Jun-2024

Environment condition

Temperature : 23 °C ± 3 °C

Humidity : 50 %RH ± 20 %RH

Customer : Thai Unique Co., Ltd.

Address : 80-82 Prachathipatai Road,
Bangkhunphrom, Pranakorn,
Bangkok 10200

Measuretronix Cal-Lab certifies that the above listed instrument meets or exceeds all specifications as stated in the referenced procedure (unless otherwise noted). The measurements are traceable to national or international measurement standards or accept fundamental or natural physical constants or have been derived by approved ratio techniques as state in the Standard Used below. The policies and procedures used comply with ISO/IEC 17025:2017.

This report applies only to the item identified and shall not be reproduced other than in full, without specific written approved by Measuretronix Cal-Lab.

The uncertainties shown are the expanded uncertainties, which calculated from the standard uncertainties multiplied by a coverage factor of $k = 2$, providing a measurement confidence level of approximately 95%.

No statement of compliance with specifications is made or implied on this certificate.

Remark : The units of uncertainty values in this report are referred to the below details :

"Volt" or "V" for voltage, "Ampere" or "A" for current, "Ohm" or "Ω" for resistance, "Farad" or "F" for capacitance, "Hertz" or "Hz" for frequency, "deg C" or "°C" for degree Celsius, "deg F" or "°F" for degree Fahrenheit, etc.

Standard Used

Serial/Asset	Description	Traceable	Cert.No.	Cal.Date	Due Date
6400011	Fluke 5500A Calibrator	NIMT	EE-0017-24	7-Mar-2024	6-Mar-2025

Certificate No. : LF24-0278

Model : 51

Serial No. : 5910857

Page 2 of 3

Test Data

TEST	RANGE	Nominal Value	UUC Tol. (+/-)	Test Result	Error	Uncertainty (+/-)
THERMOCOUPLE MEASUREMENT CALIBRATION						
TYPE K THERMOCOUPLE						
1		-195.0 °C*	0.9 °C	-195.4 °C	-0.4 °C	0.27 °C
2		-100.0 °C	0.8 °C	-100.5 °C	-0.5 °C	0.21 °C
3		-50.0 °C	0.8 °C	-50.2 °C	-0.2 °C	0.21 °C
4		0.0 °C	0.7 °C	0.0 °C	0.0 °C	0.21 °C
5		100.0 °C	0.8 °C	100.1 °C	0.1 °C	0.21 °C
6		300.0 °C	1.0 °C	300.2 °C	0.2 °C	0.21 °C
7		500.0 °C	1.2 °C	500.1 °C	0.1 °C	0.21 °C
8		1365.0 °C	2.1 °C	1365.2 °C	0.2 °C	0.32 °C
TYPE J THERMOCOUPLE						
9		-195.0 °C*	1.0 °C	-194.4 °C	0.6 °C	0.22 °C
10		-100.0 °C	0.9 °C	-99.3 °C	0.7 °C	0.18 °C
11		-50.0 °C	0.9 °C	-49.4 °C	0.6 °C	0.18 °C
12		0.0 °C	0.8 °C	0.5 °C	0.5 °C	0.18 °C
13		100.0 °C	0.9 °C	100.4 °C	0.4 °C	0.18 °C
14		300.0 °C	1.1 °C	300.8 °C	0.8 °C	0.18 °C
15		755.0 °C	1.6 °C	755.3 °C	0.3 °C	0.18 °C

End of Calibration Report

Certificate

It is hereby certified that

Suwarot Trikinut

Has successfully completed the Application Training for

Basic Gas Chromatography and Sampler

Training Contents were:

Hardware Operation, Software Operation, Data analysis and

Troubleshooting : Model

CP-3800, 3900, 450-GC, 430-GC, 456-GC, 436-GC

At Thai Unique Co., Ltd, Bangkok, Thailand

On 15th March, 2019

S. Pohtongkam

S. Pohtongkam

Service Manager

ลำดับที่ 3

คุณภาพน้ำ

**QUALITY CALIBRATION CO., LTD.**

235 Petchkasem 63/2 Road, Laksong, Bangkae, Bangkok 10160

Tel (662) 421-5402, (662) 444-0152-3, Fax (662) 809-4584

CERTIFICATE No : 24E6416
REFERENCE No : 73694-1

PAGE : 1 OF 3

Certificate of Calibration

EQUIPMENT : pH METER
MANUFACTURER : HANNA
MODEL : HI 3512
SERIAL No : TH118035
ID No : pH 04/56
CONDITION AS RECEIVED : USED ITEM
SUBMITTED BY : S.P.S. CONSULTING SERVICE CO., LTD.
7 SOI PHAHOLYOTHIN 24, PHAHOLYOTHIN RD.,
JOMPOL, CHATUCHAK, BANGKOK 10900

CALIBRATED BY : ATSAWIN Y.
CALIBRATION DATE : 27-Jun-24

APPROVED BY : PONGSAK J.

ISSUED DATE : 27-Jun-24

RECEIVED DATE : 24-Jun-24

THIS CERTIFICATE MAY NOT BE REPRODUCED OTHER THAN IN FULL EXCEPT WITH THE PRIOR WRITTEN APPROVAL OF
QUALITY CALIBRATION CO., LTD.**QUALITY CALIBRATION CO., LTD.**

235 Petchkasem 63/2 Road, Laksong, Bangkae, Bangkok 10160

Tel (662) 421-5402, (662) 444-0152-3, Fax (662) 809-4584

CERTIFICATE No : 24E6416

PAGE : 2 OF 3

Calibration Report

EQUIPMENT : pH METER
MANUFACTURER : HANNA
ID No : pH 04/56
RECEIVED DATE : 24-Jun-24
AMBIENT TEMPERATURE : 23 ° C ± 3 ° C
MODEL : HI 3512
SERIAL NUMBER : TH118035
CALIBRATION DATE : 27-Jun-24
RELATIVE HUMIDITY : 50 % RH ± 10% RH

CONDITION OF THIS RESULTS OF CALIBRATION

1. THIS INSTRUMENT WAS CALIBRATED BY DIRECT MEASUREMENT METHOD BASED ON WI-TQ-062 AND WI-TQ-063. THE DISPLAY UNIT WAS TESTED BY GENERATING STANDARD VOLTAGE TO THE UNIT AND READING THE VALUE COMPARED WITH THE CALCULATED VALUE. THE DISPLAY AND ELECTROD WAS CALIBRATED BY USING STANDARD pH BUFFER
2. REFERENCE STANDARD INSTRUMENTS :-

<u>INSTRUMENT</u>	<u>MODEL</u>	<u>SERIAL No/ LOT No</u>	<u>CERTIFICATE No</u>	<u>DUE DATE</u>
1) pH STANDARD SOLUTION	00651-06	CC784945	4880-14413915	24-Aug-25
2) pH STANDARD SOLUTION	00651-08	CC785578	4881-14430633	31-Aug-25
3) pH STANDARD SOLUTION	00651-10	CC787086	4882-14483317	21-Sep-25
4) PROCESS CALIBRATOR	CA150	91S6079	24E1251	09-Apr-25
5) BATH	260014	1247 48074	23T9014	13-Sep-24
6) THERMOMETER WITH PROBE	421504	55000379	23T9623	13-Sep-24

3. THE CERTIFICATE IS VALID FOR THE ITEM CALIBRATED AS SHOWN ON THE DATE AND PLACE OF CALIBRATION ONLY.
4. THIS RESULT EXCLUDE LONG TERM STABILITY OF THE UNIT UNDER CALIBRATION.
5. THIS CERTIFICATE IS TRACEABLE TO SI UNIT MAINTAINED AT :-
 - NATIONAL INSTITUTE OF STANDARD AND TECHNOLOGY, USA.
 - NATIONAL INSTITUTE OF METROLOGY (THAILAND)

RESULT OF CALIBRATION : ADJUSTMENT**1. DISPLAY UNIT ONLY**

SLOPE FACTOR k = 2.303 RT/F = 59 mV/pH

mV APPLIED	UUC READING (mV)	CORRECTION (mV)	UUC READING (pH)	UNCERTAINTY OF MEASUREMENT (± mV)	COVERAGE FACTOR k
414.11	414.8	-0.69	-0.115	0.15	2.00
354.95	355.5	-0.55	0.884	0.15	2.00
295.80	296.4	-0.60	1.885	0.15	2.00
236.64	237.1	-0.46	2.886	0.15	2.00
177.48	178.0	-0.52	3.887	0.15	2.00
118.32	118.8	-0.48	4.887	0.15	2.00
59.16	59.6	-0.44	5.887	0.15	2.00
0.00	0.4	-0.40	6.888	0.15	2.00
-59.16	-58.7	-0.46	8.101	0.15	2.00
-118.32	-117.9	-0.42	9.345	0.15	2.00
-177.48	-177.4	-0.08	10.589	0.15	2.00
-236.64	-236.4	-0.24	11.834	0.15	2.00
-295.80	-294.5	-1.30	13.077	0.15	2.00
-354.95	-354.7	-0.25	14.322	0.15	2.00
-414.11	-413.9	-0.21	15.565	0.15	2.00

END OF CALIBRATION REPORT PAGE 2 OF 3

**QUALITY CALIBRATION CO., LTD.**

235 Petchkasem 63/2 Road, Laksong, Bangkae, Bangkok 10160

Tel (662) 421-5402, (662) 444-0152-3, Fax (662) 809-4584

CERTIFICATE No : 24E6416

PAGE : 3 OF 3

Calibration Report**RESULT OF CALIBRATION (CONTINUE) :****2. DISPLAY UNIT WITH pH ELECTRODE S/N: 09081C6M**

STANDARD pH BUFFER SOLUTION (pH)	UUC READING (pH)	CORRECTION (pH)	VALUE BEFORE ADJUSTMENT	UNCERTAINTY OF MEASUREMENT (± pH)	COVERAGE FACTOR k
4.015	4.011	0.004	3.905	0.012	2.00
7.003	7.003	0.000	6.972	0.012	2.00
10.009	10.014	-0.005	9.570	0.014	2.00

3. DISPLAY UNIT WITH TEMPERATURE

STANDARD READING (°C)	UUC READING (°C)	CORRECTION (°C)	VALUE BEFORE ADJUSTMENT	UNCERTAINTY OF MEASUREMENT (± °C)	COVERAGE FACTOR k
25.004	25.0	0.004	---	0.0085	2.00

4. PERCENT SLOPE 100%

UUC : UNIT UNDER CALIBRATION

THE REPORTED UNCERTAINTY OF MEASUREMENT WAS BASED ON A STANDARD UNCERTAINTY MULTIPLIED BY A COVERAGE FACTOR k, PROVIDING A LEVEL OF CONFIDENCE APPROXIMATELY 95%.

END OF CALIBRATION REPORT



Harikul Science Co.,Ltd.

694 Soi Ratchadanivet 24, Pracharatbamphen,

Samsaennok, Huaikhwang, Bangkok 10310

Tel: 0-2274-2456 Fax: 0-2274-2443

Email: info@harikul.com www.harikul.com

Certificate of Calibration

CERT.No.: HS-W015C

Calibration Date : 18 Mar 25

Submitted by : S.P.S CONSULTING SERVICE CO.,LTD

7 Soi Phaholyothin 24, Phaholyothin Rd., Jompol,

Chatuchak, Bangkok, Thailand 10900

Model : YSI 5000

S/N : 15B100751

Probe : YSI 5010

S/N : 22D100097

ID NO. : -

Air Temp ref : S/N. F8065C26

Barometric ref : S/N. F8065C26

Water Temp ref : -

ID NO. HS001

Technician : Kittipong M.

Calibration Details

Calibration Point	100% air sat. (@20 °C, DO = 9.09 mg/l)	(status)	(status)
Measurement 1 (mg/l)	9.08	(PASS)	-
Measurement 2 (mg/l)	9.08	(PASS)	-
Measurement 3 (mg/l)	9.08	(PASS)	-
Measurement 4 (mg/l)	9.07	(PASS)	-
Measurement 5 (mg/l)	9.07	(PASS)	-
Measurement 6 (mg/l)	9.07	(PASS)	-
Measurement 7 (mg/l)	9.07	(PASS)	-
Measurement 8 (mg/l)	9.07	(PASS)	-
Measurement 9 (mg/l)	9.07	(PASS)	-
Measurement 10 (mg/l)	9.07	(PASS)	-

Mean Measurement	9.07	mg/l	-	-
Inaccuracy	0.02	mg/l	-	-

Overall Status (PASS)**Manufacturer Specification**

Accuracy = +/- 0.02 mg/l

- 1) This certificate is issued based on the result that are found as shown on date and place of test only.
- 2) The calibration procedure followed in accordance with Harikul Science Co., Ltd.
- 3) This result shall not be used for advertising purpose.

Technician Signature

(Kittipong Maekwong)

Laboratory Manager

(Natenapha Pisatkunchon)

CERTIFICATE No : 25M2256
REFERENCE No : 76365-3

PAGE : 1 OF 2

Certificate of Calibration

EQUIPMENT : DIGITAL BALANCE

MANUFACTURER : SARTORIUS

MODEL : BSA224S-CW

SERIAL No : 36591843

ID No : BA09/61

CONDITION AS RECEIVED : USED ITEM

SUBMITTED BY : S.P.S. CONSULTING SERVICE CO., LTD.
7 SOI PHAHOLYOTHIN 24, PHAHOLYOTHIN RD.,
JOMPOL, CHATUCHAK, BANGKOK 10900

CALIBRATED BY : ATSAWIN Y.

CALIBRATION DATE : 07-Mar-25

APPROVED BY : PONGSAK J.

ISSUED DATE : 13-Mar-25

RECEIVED DATE : 07-Mar-25

THIS CERTIFICATE MAY NOT BE REPRODUCED OTHER THAN IN FULL EXCEPT WITH THE PRIOR WRITTEN APPROVAL OF
QUALITY CALIBRATION CO., LTD.

CERTIFICATE No : 25M2256

PAGE : 2 OF 2

Calibration Report

EQUIPMENT : DIGITAL BALANCE MODEL : BSA224S-CW

MANUFACTURER : SARTORIUS S/N : 36591843

ID No : BA09/61 RECEIVED DATE : 07-Mar-25

AIR PRESSURE : 1009mbar \pm 1mbar CALIBRATION DATE : 07-Mar-25

AMBIENT TEMPERATURE : 24°C + 1°C RELATIVE HUMIDITY : 52 %RH \pm 10 % RH

CONDITION OF THIS RESULTS OF CALIBRATION

1. THIS INSTRUMENT WAS CALIBRATED BY ACCORDING TO UKAS LAB 14 EDITION 6:2019 BY USING KNOWN WEIGHT STANDARD WEIGHT. THE BALANCE WAS NOT ADJUSTED BEFORE CALIBRATION. THE BALANCE HAS NO ZERO TRACKING FUNCTION. REPEATABILITY WAS MEASURED BY USING 10 REPEATED MEASUREMENTS. LINEARITY WAS MEASURED COVERING 10 POINTS, EVENLY SPREAD OVER THE RANGE. THE INSTRUMENT WAS SET ZERO BEFORE PERFORMING THE LINEARITY TEST. OFF-CENTER LOADING WAS MEASURED BY USING STANDARD WEIGHTS PLACED ON THE PAN AND MOVED TO VARIOUS POSITIONS ON THE PAN.

2. REFERENCE STANDARD INSTRUMENTS :-

INSTRUMENT	MODEL	SERIAL No	CERTIFICATE No	DUE DATE
1) STANDARD WEIGHT SET	E2	QK-1-151	C02250116	28-Jan-27
2) STANDARD WEIGHT	E2	15843	C02250117	29-Jan-27

3. THE CERTIFICATE IS VALID FOR THE ITEM CALIBRATED AS SHOWN ON THE DATE AND PLACE OF CALIBRATION ONLY.

4. THIS RESULT EXCLUDE LONG TERM STABILITY OF THE UNIT UNDER CALIBRATION.

5. THIS CERTIFICATE IS TRACEABLE TO THE INTERNATIONAL SYSTEM OF UNIT MAINTAINED AT:-
- NATIONAL INSTITUTE OF METROLOGY (THAILAND)

RESULT OF CALIBRATION :- WITHOUT ADJUSTMENT

1. ZERO SETTING FUNCTION : NORMAL

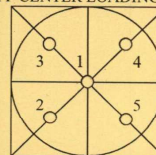
2. TARE FUNCTION : NORMAL

3. REPEATABILITY OF READING AT 200 g WAS 0.000071 g

4. DEPARTURE FROM NOMINAL VALUE/ LINEARITY

NOMINAL VALUE (g)	BALANCE READING (g)	CORRECTION (g)	UNCERTAINTY (\pm g)
0.00	0.0000	0.0000	0.00012
0.10	0.1000	0.0000	0.00012
0.20	0.2000	0.0000	0.00012
0.50	0.5000	0.0000	0.00012
1.00	1.0000	0.0000	0.00012
2.00	2.0000	0.0000	0.00012
5.00	5.0000	0.0000	0.00012
10.00	10.0000	0.0000	0.00012
20.00	20.0001	-0.0001	0.00012
50.00	50.0000	0.0000	0.00014
100.00	100.0001	-0.0001	0.00019
200.00	200.0001	-0.0001	0.00032

5. OFF CENTER LOADING ERROR



POINT	READING (g)
1	100.0000
2	100.0000
3	100.0000
4	100.0000
5	100.0000
OFF-CENTER LOADING	0.0000

NOTE: THIS CALIBRATION WAS CARRIED OUT AT THE CUSTOMER'S PLACE AT LABORATORY AREA
THE REPORTED UNCERTAINTY OF MEASUREMENT WAS BASED ON A STANDARD UNCERTAINTY MULTIPLIED BY A
COVERAGE FACTOR $k=2$, PROVIDING A LEVEL OF CONFIDENCE APPROXIMATELY 95%.

END OF CALIBRATION REPORT



**QUALITY CALIBRATION CO., LTD.**

235 Petchkasem 63/2 Road, Laksong, Bangkac, Bangkok 10160

Tel (662) 421-5402, (662) 444-0152-3, Fax (662) 809-4584

www.qcalibration.com

CERTIFICATE No : 25T0520
REFERENCE No : 75853-1

PAGE : 1 OF 2

Certificate of Calibration

EQUIPMENT : COD REACTOR

MANUFACTURER : HACH

MODEL : DRB 200

SERIAL No : 15110C0497

ID No : DRB 05/59

CONDITION AS RECEIVED : USED ITEM

SUBMITTED BY : S.P.S. CONSULTING SERVICE CO., LTD.
7 SOI PHAHOLYOTHIN 24, PHAHOLYOTHIN RD.,
JOMPOL, CHATUCHAK, BANGKOK 10900

CALIBRATED BY : CHAICHARN CH.

CALIBRATION DATE : 27-Jan-25

APPROVED BY : 
PONGSAK J.

ISSUED DATE : 27-Jan-25

RECEIVED DATE : 15-Jan-25

THIS CERTIFICATE MAY NOT BE REPRODUCED OTHER THAN IN FULL EXCEPT WITH THE PRIOR WRITTEN APPROVAL OF
QUALITY CALIBRATION CO., LTD.

F-G010 REV : 03

**QUALITY CALIBRATION CO., LTD.**

235 Petchkasem 63/2 Road, Laksong, Bangkac, Bangkok 10160

Tel (662) 421-5402, (662) 444-0152-3, Fax (662) 809-4584

CERTIFICATE No : 25T0520

PAGE : 2 OF 2

Calibration Report

EQUIPMENT : COD REACTOR

MANUFACTURER : HACH

ID NUMBER : DRB 05/59

RECEIVED DATE : 15-Jan-25

AMBIENT TEMPERATURE : 23° C ± 1° C

MODEL : DRB 200

SERIAL NUMBER : 15110C0497

CALIBRATION DATE : 27-Jan-25

RELATIVE HUMIDITY : 53 %RH ± 10 % RH

CONDITION OF THIS RESULTS OF CALIBRATION

1. THIS INSTRUMENT WAS CALIBRATED BY DIRECT MEASUREMENT METHOD WITH CALIBRATED THERMOCOUPLE TYPE K UNDER NO LOAD CONDITION. THE THERMOCOUPLES WERE PLACED ON POINTS AND LOCATED AS THE PICTURE.

2. REFERENCE STANDARD INSTRUMENTS :-

<u>INSTRUMENT</u>	<u>MODEL</u>	<u>SERIAL No</u>	<u>CERTIFICATE No</u>	<u>DUE DATE</u>
1) DATA LOGGER WITH TC TYPE K	HYDRA 2635A	6635300	24T6468	26-Jun-25

3. THE CERTIFICATE IS VALID FOR THE ITEM CALIBRATED AS SHOWN ON THE DATE AND PLACE OF CALIBRATION ONLY.

4. THIS RESULT EXCLUDE LONG TERM STABILITY OF THE UNIT UNDER CALIBRATION.

5. THIS CERTIFICATE IS TRACEABLE TO THE INTERNATIONAL SYSTEM OF UNIT MAINTAINED AT:-
- NATIONAL INSTITUTE OF METROLOGY (THAILAND) THROUGH QUALITY CALIBRATION CO., LTD.

RESULT OF CALIBRATION :- WITHOUT ADJUSTMENT

13	14	15
10	11	12
7	8	9
4	5	6
1	2	3

BLOCK No.1
FRONT

13	14	15
10	11	12
7	8	9
4	5	6
1	2	3

BLOCK No.2
FRONT

Block No.		1	2
Calibration Point (°C)		150	150
Controller temperature (°C)		144	144
Indicating Temperature		144	144
Measured Temperature (° C) at Spread Locations	1	150.01	149.57
	2	150.69	150.44
	3	150.40	149.46
	4	150.22	149.89
	5	150.27	149.75
	6	150.51	150.45
	7	150.24	150.03
	8	150.20	150.08
	9	150.14	150.14
	10	149.70	149.83
	11	149.58	149.89
	12	149.46	149.79
	13	148.77	149.03
	14	148.99	149.14
	15	149.02	149.62
Uncertainty of Measurement(± °C)		0.87	0.87

NOTE 1 : THE UNCERTAINTY OF MEASUREMENT EXCLUDED TEMPERATURE UNIFORMITY OF THE CHAMBER.

NOTE 2 : LOCATION 10 WAS REFERENCE LOCATION.

NOTE 3 : THIS CALIBRATION WAS CARRIED OUT AT THE CUSTOMER'S PLACE AT LABORATORY AREA.

THE REPORTED UNCERTAINTY OF MEASUREMENT WAS BASED ON A STANDARD UNCERTAINTY MULTIPLIED BY A COVERAGE FACTOR k=2, PROVIDING A LEVEL OF CONFIDENCE APPROXIMATELY 95%.

END OF CALIBRATION REPORT



F-G010 REV : 03

ลำดับที่ 4

ระดับเสียงทั่วไป



THAILAND INSTITUTE OF SCIENTIFIC AND TECHNOLOGICAL RESEARCH (TISTR)

Request No. 21-68/0220

MTC No. EEL. BP. 45/0268

CALIBRATION CERTIFICATE

Submitted by : S.P.S.Consulting Service Co.,Ltd.

Address : 7 Soi Phaholyothin 24, Phaholyothin Road, Jompol, Chatuchak, Bangkok 10900.

Calibrated at : Electrical and Electronic Standards Laboratory, Industrial Metrology and Testing Service Centre.
Soi 1C, Bangpoo Industrial Estate, Sukhumvit Rd., Muang, Samutprakan 10280.

Instrument Calibrated :

Description : Acoustic Calibrator

Manufacturer : Cirrus Research plc

Model : CR:515

Serial No. : 92002

Ambient Environment

Temperature : (23 + 3) °C

Relative Humidity : (50 ± 15) %

Ambient Pressure : (101.325 ± 1.500) kPa

- Standards used :
1. Digital Function Synthesizer NF Electronic DF-193A S/N 122037.
 2. Measuring Amplifier Bruel&Kjaer 2636 S/N 1537484.
 3. Programmable Attenuator Tamagawa TPA-303A S/N OF 2214.
 4. Digital Multimeter Agilent 34401A S/N MY44005560.
 5. Pressure Transmitter Vaisala PTB202AD S/N T0650001.
 6. Audio Analyzer Panasonic VP-7722A S/N 041477D122.
 7. Condenser Microphone B&K 4180 S/N 2889871.

Calibration Procedure: CP-102-04 based on IEC 60942-2003; The sound pressure level generated by sound calibrator under test shall be measured by standard microphone using an insert voltage technique.

This instrument has been calibrated against standards maintained at Electrical and Electronic Standards Laboratory (EEL), which are traceable to the International System of Units through the National Institute of Metrology (Thailand).

The information on actual reading is attached herewith and the uncertainty limits quoted refer to the measured values only.

Date of Receipt : 19 Feb. 2025

Date of Calibration : 21 Feb. 2025

1 / 2

The results relate only to the items tested/calibrated or value assigned.

Advertising the Report/Certificate and publicity of the results except in full are prohibited unless written permission is obtained from the governor of TISTR.

Head Office

35 Mu 3 Tambon Khlong Ha, Amphoe Khlong Luang,
Changwat Pathumthani 12120, Thailand
Tel. (66) 0 2577 9036
Fax. (66) 0 2577 9009

Office/Laboratory

668 Mu 2 Tambon Bangpoomai, Amphoe Muang Samutprakan,
Changwat Samutprakan 10280, Thailand
Tel. (66) 0 2323 1672-80 ext. 115, 116
(66) 08 3219 9440
E-mail : mtc@tistr.or.th Website : www.tistr.or.th

Office

196 Phahonyothin Road, Ladyao, Chatuchak,
Bangkok 10900, Thailand
Tel. (66) 0 2579 1121-30 ext. 5219, 5225, 5217
(66) 08 1889 6827

FM.BL.MTC.002 Rev.5



THAILAND INSTITUTE OF SCIENTIFIC AND TECHNOLOGICAL RESEARCH (TISTR)

Request No. 21-68/0220

MTC No. EEL. BP. 45/0268

The reported expanded uncertainty is based upon a standard uncertainty multiplied by a coverage factor k = 2, providing a level of confidence of approximately 95%.

Nominal Output of Unit Under Test = 94 dB re 20µPa at 1000 Hz

Acoustic Output in dB re 20µPa, Corrected to Reference Conditions: 101.325 kPa, 23.0 °C and 50 %RH.

1. Sound Pressure Level

Standard Microphone Type	Measured Sound Pressure Level (dB)	Deviated value (dB)	Uncertainty (dB)	Tolerance limit IEC60942:2003 Class 1
1/2 inch Bruel&Kjaer 4180	93.98	-0.02	± 0.10	±0.40 dB

2. Frequency

Standard Microphone Type	Measured Frequency (Hz)	Deviated value (Hz)	Uncertainty (Hz)	Tolerance limit IEC60942:2003 Class 1
1/2 inch Bruel&Kjaer 4180	1000.1	0.1	± 1.5	±1.0%

3. Total Distortion

Standard Microphone Type	Measured Total Distortion (%)	Uncertainty (%)	Tolerance limit IEC60942:2003 Class 1
1/2 inch Bruel&Kjaer 4180	0.65	± 0.50	±3.0%

Note : 1. No adjustment.

2. The calibrator pressure correction was not included.

3. The microphone volume correction was not included.

Calibrated by :

(Mr.Weerachai Deechaiyae)

Approved by :

(Mr.Prawate Kluaypa)

Electrical and Electronic Standards Laboratory

Industrial Metrology and Testing Service Centre

Date of Calibration : 21 Feb. 2025

Date of Issue : 24 Feb. 2025

Ref : 2011268021900739002

End of Certificate

2 / 2

The results relate only to the items tested/calibrated or value assigned.

Advertising the Report/Certificate and publicity of the results except in full are prohibited unless written permission is obtained from the governor of TISTR.

Head Office

35 Mu 3 Tambon Khlong Ha, Amphoe Khlong Luang,
Changwat Pathumthani 12120, Thailand
Tel. (66) 0 2577 9036
Fax. (66) 0 2577 9009

Office/Laboratory

668 Mu 2 Tambon Bangpoomai, Amphoe Muang Samutprakan,
Changwat Samutprakan 10280, Thailand
Tel. (66) 0 2323 1672-80 ext. 115, 116
(66) 08 3219 9440
E-mail : mtc@tistr.or.th Website : www.tistr.or.th

Office

196 Phahonyothin Road, Ladyao, Chatuchak,
Bangkok 10900, Thailand
Tel. (66) 0 2579 1121-30 ext. 5219, 5225, 5217
(66) 08 1889 6827

FM.BL.MTC.002 Rev.5



บริษัท เอส.พี.เอส. คอนซัลติ้ง เซอร์วิส จำกัด
S.P.S. CONSULTING SERVICE CO., LTD.
7 ซอยพหลโยธิน 24 ถนนพหลโยธิน แขวงจตุจักร เขตจตุจักร กรุงเทพฯ 10900
Tel : (662) 939-4370-72 Fax : (662) 513-4221 E-mail : sale@spscon.com, www.spscon.com

Noise R_279/25

Sound Level Meter Calibration Report

Acoustic Calibrator Data

Brand	CIRRUS	Number	AC-CR01/63
Model	CR515	Serial No.	92002
Calibration Range	94 dB, 1000 Hz	Last Calibration	21 February 2025
		Due Date	21 February 2026

Calibration Data

Sound Level Meter Data				Calibration Data		
SLM No.	Brand	Model	Serial No.	Date	Actual Reading [dB]	
					Before Adjustment	After Adjustment
CR-B02	Cirrus	CR161B	G301157	28 April 2025	94.0	94.0
CR-B04	Cirrus	CR161B	G301404	28 April 2025	94.0	94.0
CR-B05	Cirrus	CR161B	G301134	28 April 2025	94.1	94.0
CR-B06	Cirrus	CR161B	G301151	28 April 2025	94.0	94.0
CR-B07	Cirrus	CR161B	G301167	28 April 2025	94.0	94.0
CR-B08	Cirrus	CR161B	G301397	28 April 2025	94.0	94.0
CR-B09	Cirrus	CR161B	G301401	28 April 2025	94.0	94.0
CR-B10	Cirrus	CR161B	G301407	28 April 2025	94.0	94.0
Acoustic Certified Value : Thailand Institute of Scientific and Technological Research (TISTR)					93.98 ± 0.10 dB	

Calibrated by :

Adul Dangklom
(Mr. Adul Dangklom)

Approved by :

Peera Detudom
(Mr. Peera Detudom)